

SSPN Antibody (N-term)
Affinity Purified Rabbit Polyclonal Antibody (Pab)
Catalog # AW5200

Specification

SSPN Antibody (N-term) - Product Information

Application	WB,E
Primary Accession	Q14714
Reactivity	Human
Host	Rabbit
Clonality	Polyclonal
Calculated MW	H=27,14 KDa
Isotype	Rabbit IgG
Antigen Source	Human

SSPN Antibody (N-term) - Additional Information

Gene ID 8082

Antigen Region
6-34

Other Names

SSPN;KRAG; Sarcospan; Sarcospan; K-ras oncogene-associated protein; Sarcospan;
Kirsten-ras-associated protein

Dilution

WB~~1:1000

Target/Specificity

This SSPN antibody is generated from rabbits immunized with a KLH conjugated synthetic peptide between 6-34 amino acids from the N-terminal region of human SSPN.

Format

Purified polyclonal antibody supplied in PBS with 0.09% (W/V) sodium azide. This antibody is purified through a protein A column, followed by peptide affinity purification.

Storage

Maintain refrigerated at 2-8°C for up to 2 weeks. For long term storage store at -20°C in small aliquots to prevent freeze-thaw cycles.

Precautions

SSPN Antibody (N-term) is for research use only and not for use in diagnostic or therapeutic procedures.

SSPN Antibody (N-term) - Protein Information

Name SSPN

Synonyms KRAG**Function**

Component of the dystrophin-glycoprotein complex (DGC), a complex that spans the muscle plasma membrane and forms a link between the F-actin cytoskeleton and the extracellular matrix. Preferentially associates with the sarcoglycan subcomplex of the DGC.

Cellular Location

Cell membrane; Multi-pass membrane protein. Cell membrane, sarcolemma Postsynaptic cell membrane; Multi-pass membrane protein. Note=Also found in myotendinous junctions and in the postsynaptic membrane of neuromuscular junctions.

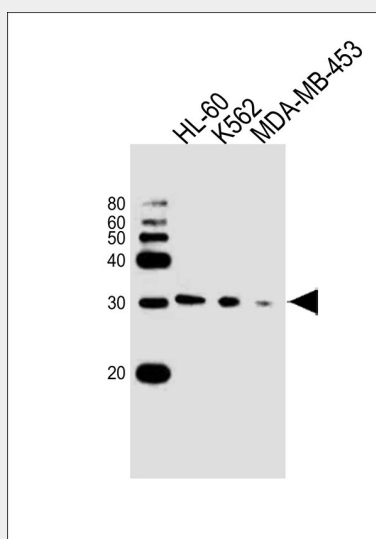
Tissue Location

Isoform 1 is expressed exclusively in heart and skeletal muscle. Isoform 2 is expressed in heart, skeletal muscle, thymus, prostate, testis, ovary, small intestine, colon and spleen

SSPN Antibody (N-term) - Protocols

Provided below are standard protocols that you may find useful for product applications.

- [Western Blot](#)
- [Blocking Peptides](#)
- [Dot Blot](#)
- [Immunohistochemistry](#)
- [Immunofluorescence](#)
- [Immunoprecipitation](#)
- [Flow Cytometry](#)
- [Cell Culture](#)

SSPN Antibody (N-term) - Images

Western blot analysis of lysates from HL-60, K562, MDA-MB-453 cell line (from left to right), using SSPN Antibody (N-term) (Cat. #AW5200). AW5200 was diluted at 1:1000 at each lane. A goat anti-rabbit IgG H&L (HRP) at 1:10000 dilution was used as the secondary antibody. Lysates at 20ug per lane.

SSPN Antibody (N-term) - Background

Component of the dystrophin-glycoprotein complex (DGC), a complex that spans the muscle plasma membrane and forms a link between the F-actin cytoskeleton and the extracellular matrix. Preferentially associates with the sarcoglycan subcomplex of the DGC.

SSPN Antibody (N-term) - References

Crosbie R.H., et al. J. Biol. Chem. 272:31221-31224(1997).
Crosbie R.H., et al. Submitted (APR-2000) to the EMBL/GenBank/DDBJ databases.
Wiemann S., et al. Genome Res. 11:422-435(2001).
Heighway J., et al. Genomics 35:207-214(1996).