

R Cgref1 Antibody (C-term)
Affinity Purified Rabbit Polyclonal Antibody (Pab)
Catalog # AW5202

Specification

R Cgref1 Antibody (C-term) - Product Information

Application	WB,E
Primary Accession	P97586
Reactivity	Rat
Host	Rabbit
Clonality	Polyclonal
Calculated MW	Rat=31 KDa
Isotype	Rabbit IgG
Antigen Source	Rat

R Cgref1 Antibody (C-term) - Additional Information

Gene ID 245918

Antigen Region
220-248

Other Names

Cgref1;Cgr11; Cell growth regulator with EF hand domain protein 1; Cell growth regulator with EF hand domain protein 1; Cell growth regulatory gene 11 protein; Cell growth regulator with EF hand domain protein 1; Hydrophobestin

Dilution

WB~~1:1000

Target/Specificity

This RAT Cgref1 antibody is generated from rabbits immunized with a KLH conjugated synthetic peptide between 220-248 amino acids from the C-terminal region of rat Cgref1.

Format

Purified polyclonal antibody supplied in PBS with 0.09% (W/V) sodium azide. This antibody is purified through a protein A column, followed by peptide affinity purification.

Storage

Maintain refrigerated at 2-8°C for up to 2 weeks. For long term storage store at -20°C in small aliquots to prevent freeze-thaw cycles.

Precautions

R Cgref1 Antibody (C-term) is for research use only and not for use in diagnostic or therapeutic procedures.

R Cgref1 Antibody (C-term) - Protein Information

Name Cgref1 {ECO:0000312|RGD:620801}

Synonyms Cgr11

Function

Mediates cell-cell adhesion in a calcium-dependent manner. Able to inhibit growth in several cell lines.

Cellular Location

Secreted.

Tissue Location

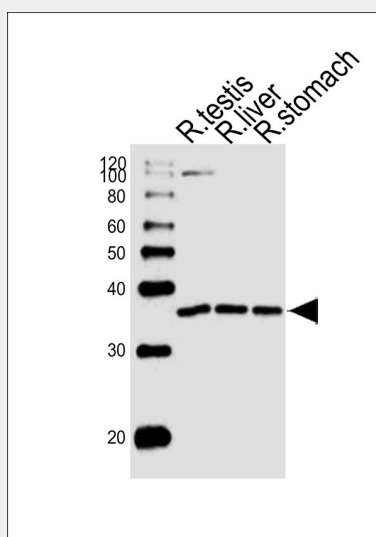
Expressed predominantly in whole brain and kidney, with limited expression in heart, lung, liver, and skeletal muscle and no expression in spleen and testis. Also expressed in pituitary gland, adrenal gland, digestive tract, and reproductive organs

R Cgref1 Antibody (C-term) - Protocols

Provided below are standard protocols that you may find useful for product applications.

- [Western Blot](#)
- [Blocking Peptides](#)
- [Dot Blot](#)
- [Immunohistochemistry](#)
- [Immunofluorescence](#)
- [Immunoprecipitation](#)
- [Flow Cytometry](#)
- [Cell Culture](#)

R Cgref1 Antibody (C-term) - Images



Western blot analysis of lysates from rat testis, rat liver, rat stomach tissue lysate (from left to right), using RAT Cgref1 Antibody (C-term) (Cat. #AW5202). AW5202 was diluted at 1:1000 at each lane. A goat anti-rabbit IgG H&L (HRP) at 1:10000 dilution was used as the secondary antibody.

R Cgref1 Antibody (C-term) - Background

Mediates cell-cell adhesion in a calcium-dependent manner. Able to inhibit growth in several cell lines.

R Cgref1 Antibody (C-term) - References

Madden S.L., et al. Cancer Res. 56:5384-5390(1996).
Devnath S., et al. Eur. J. Cell Biol. 88:521-529(2009).