

**APOD Antibody (N-term)**  
**Purified Rabbit Polyclonal Antibody (Pab)**  
**Catalog # AW5226****Specification**

---

**APOD Antibody (N-term) - Product Information**

Application	WB,E
Primary Accession	<a href="#">P05090</a>
Other Accession	<a href="#">P23593</a> , <a href="#">P37153</a> , <a href="#">P51910</a>
Reactivity	Human, Mouse
Predicted	Rabbit, Rat
Host	Rabbit
Clonality	Polyclonal
Calculated MW	H=21;M=22;Rat=22 KDa
Isotype	Rabbit IgG
Antigen Source	HUMAN

**APOD Antibody (N-term) - Additional Information****Gene ID** 347**Antigen Region**  
26-53**Other Names**  
APOD; Apolipoprotein D**Dilution**  
WB~~1:1000**Target/Specificity**  
This APOD antibody is generated from rabbits immunized with a KLH conjugated synthetic peptide between 26-53 amino acids from the N-terminal region of human APOD.**Format**  
Purified polyclonal antibody supplied in PBS with 0.09% (W/V) sodium azide. This antibody is prepared by Saturated Ammonium Sulfate (SAS) precipitation followed by dialysis against PBS.**Storage**  
Maintain refrigerated at 2-8°C for up to 2 weeks. For long term storage store at -20°C in small aliquots to prevent freeze-thaw cycles.**Precautions**  
APOD Antibody (N-term) is for research use only and not for use in diagnostic or therapeutic procedures.**APOD Antibody (N-term) - Protein Information**

**Name** APOD**Function**

APOD occurs in the macromolecular complex with lecithin- cholesterol acyltransferase. It is probably involved in the transport and binding of bilin. Appears to be able to transport a variety of ligands in a number of different contexts.

**Cellular Location**

Secreted.

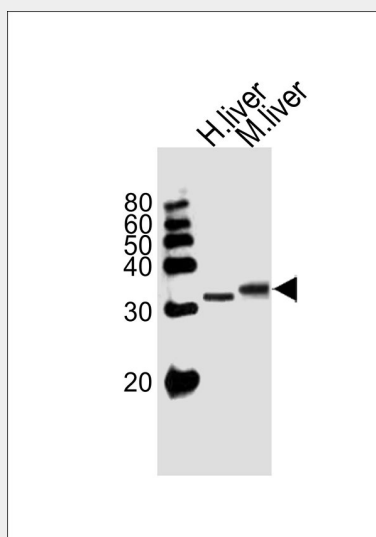
**Tissue Location**

Expressed in liver, intestine, pancreas, kidney, placenta, adrenal, spleen, fetal brain tissue and tears

**APOD Antibody (N-term) - Protocols**

Provided below are standard protocols that you may find useful for product applications.

- [Western Blot](#)
- [Blocking Peptides](#)
- [Dot Blot](#)
- [Immunohistochemistry](#)
- [Immunofluorescence](#)
- [Immunoprecipitation](#)
- [Flow Cytometry](#)
- [Cell Culture](#)

**APOD Antibody (N-term) - Images**

Western blot analysis of lysates from human liver, mouse liver tissue lysate (from left to right), using APOD Antibody (N-term) (Cat. #AW5226). AW5226 was diluted at 1:1000 at each lane. A goat anti-rabbit IgG H&L (HRP) at 1:10000 dilution was used as the secondary antibody.

**APOD Antibody (N-term) - Background**

APOD is a component of high density lipoprotein that has no marked similarity to other apolipoprotein sequences. It has a high degree of homology to plasma retinol-binding protein and

other members of the alpha 2 microglobulin protein superfamily of carrier proteins, also known as lipocalins. This glycoprotein is closely associated with the enzyme lecithin:cholesterol acyltransferase - an enzyme involved in lipoprotein metabolism.

**APOD Antibody (N-term) - References**

Do Carmo,S., J. Neurosci. 28 (41), 10330-10338 (2008)  
Chen,Y., Brain Res. 1233, 196-202 (2008)  
Wei,Y.J., Biomarkers 13 (5), 535-548 (2008)