

HMGCS1 Antibody (Center)
Purified Rabbit Polyclonal Antibody (Pab)
Catalog # AW5269**Specification**

HMGCS1 Antibody (Center) - Product Information

Application	WB, IHC-P, FC,E
Primary Accession	Q01581
Other Accession	P17425 , Q8JZK9 , P13704 , P23228
Reactivity	Human, Mouse, Rat
Predicted	Chicken, Hamster
Host	Rabbit
Clonality	Polyclonal
Calculated MW	H=57,M=58,Rat=57 KDa
Isotype	Rabbit IgG
Antigen Source	HUMAN

HMGCS1 Antibody (Center) - Additional Information**Gene ID** 3157**Antigen Region**
290-317**Other Names**

HMGCS1; HMGCS; Hydroxymethylglutaryl-CoA synthase, cytoplasmic; 3-hydroxy-3-methylglutaryl coenzyme A synthase

Dilution

WB~~ 1:1000

IHC-P~~1:50~100

FC~~1:10~50

Target/Specificity

This HMGCS1 antibody is generated from rabbits immunized with a KLH conjugated synthetic peptide between 290-317 amino acids from the Central region of human HMGCS1.

Format

Purified polyclonal antibody supplied in PBS with 0.09% (W/V) sodium azide. This antibody is prepared by Saturated Ammonium Sulfate (SAS) precipitation followed by dialysis against PBS.

Storage

Maintain refrigerated at 2-8°C for up to 2 weeks. For long term storage store at -20°C in small aliquots to prevent freeze-thaw cycles.

Precautions

HMGCS1 Antibody (Center) is for research use only and not for use in diagnostic or therapeutic procedures.

HMGCs1 Antibody (Center) - Protein Information

Name HMGCs1 ([HGNC:5007](#))

Synonyms HMGCs

Function

Catalyzes the condensation of acetyl-CoA with acetoacetyl-CoA to form HMG-CoA, which is converted by HMG-CoA reductase (HMGCR) into mevalonate, a precursor for cholesterol synthesis.

Cellular Location

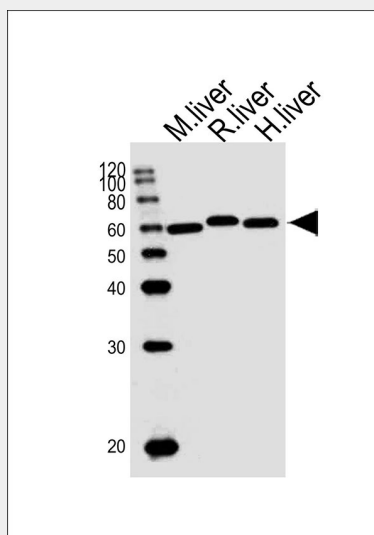
Cytoplasm.

HMGCs1 Antibody (Center) - Protocols

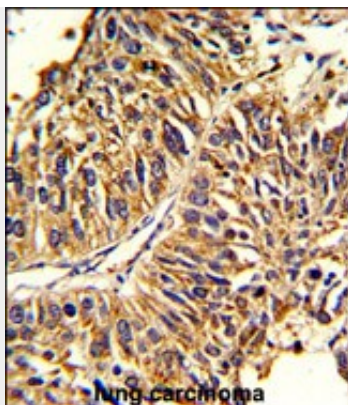
Provided below are standard protocols that you may find useful for product applications.

- [Western Blot](#)
- [Blocking Peptides](#)
- [Dot Blot](#)
- [Immunohistochemistry](#)
- [Immunofluorescence](#)
- [Immunoprecipitation](#)
- [Flow Cytometry](#)
- [Cell Culture](#)

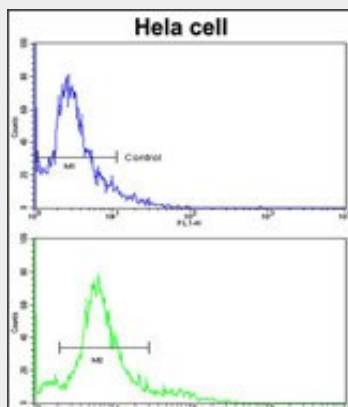
HMGCs1 Antibody (Center) - Images



Western blot analysis of lysates from mouse liver, rat liver, human liver tissue (from left to right), using HMGCs1 Antibody (Center) (Cat. #AW5269). AW5269 was diluted at 1:1000 at each lane. A goat anti-rabbit IgG H&L (HRP) at 1:10000 dilution was used as the secondary antibody.



Formalin-fixed and paraffin-embedded human lung carcinoma reacted with HMGCS1 Antibody (Center), which was peroxidase-conjugated to the secondary antibody, followed by DAB staining. This data demonstrates the use of this antibody for immunohistochemistry; clinical relevance has not been evaluated.



Flow cytometric analysis of hela cells using HMGCS1 Antibody (Center)(bottom histogram) compared to a negative control cell (top histogram). FITC-conjugated goat-anti-rabbit secondary antibodies were used for the analysis.

HMGCS1 Antibody (Center) - Background

HMGCS1 condenses acetyl-CoA with acetoacetyl-CoA to form HMG-CoA, which is the substrate for HMG-CoA reductase.

HMGCS1 Antibody (Center) - References

Vock,C., Cell. Physiol. Biochem. 22 (5-6), 515-524 (2008)