

**NRAS Antibody (C-term)**  
**Purified Rabbit Polyclonal Antibody (Pab)**  
**Catalog # AW5296****Specification**

---

**NRAS Antibody (C-term) - Product Information**

Application	WB, IHC-P, FC,E
Primary Accession	<a href="#">P01111</a>
Other Accession	<a href="#">Q2MJK3</a>
Reactivity	Human
Predicted	Pig
Host	Rabbit
Clonality	Polyclonal
Calculated MW	H=21;M=21;Rat=21 KDa
Isotype	Rabbit IgG
Antigen Source	HUMAN

**NRAS Antibody (C-term) - Additional Information****Gene ID** 4893**Antigen Region**  
147-179**Other Names**  
NRAS; HRAS1; GTPase NRas; Transforming protein N-Ras**Dilution**  
WB~~1:1000  
IHC-P~~1:10~50  
FC~~1:10~50**Target/Specificity**  
This NRAS antibody is generated from rabbits immunized with a KLH conjugated synthetic peptide between 147-179 amino acids from the C-terminal region of human NRAS.**Format**  
Purified polyclonal antibody supplied in PBS with 0.09% (W/V) sodium azide. This antibody is prepared by Saturated Ammonium Sulfate (SAS) precipitation followed by dialysis against PBS.**Storage**  
Maintain refrigerated at 2-8°C for up to 2 weeks. For long term storage store at -20°C in small aliquots to prevent freeze-thaw cycles.**Precautions**  
NRAS Antibody (C-term) is for research use only and not for use in diagnostic or therapeutic procedures.**NRAS Antibody (C-term) - Protein Information**

**Name** NRAS

**Synonyms** HRAS1

**Function**

Ras proteins bind GDP/GTP and possess intrinsic GTPase activity.

**Cellular Location**

Cell membrane; Lipid-anchor; Cytoplasmic side. Golgi apparatus membrane; Lipid-anchor

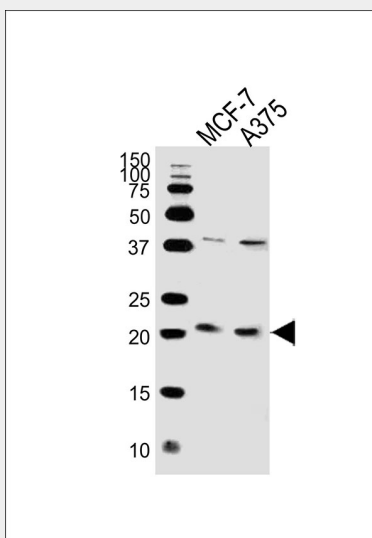
Note=Shuttles between the plasma membrane and the Golgi apparatus

**NRAS Antibody (C-term) - Protocols**

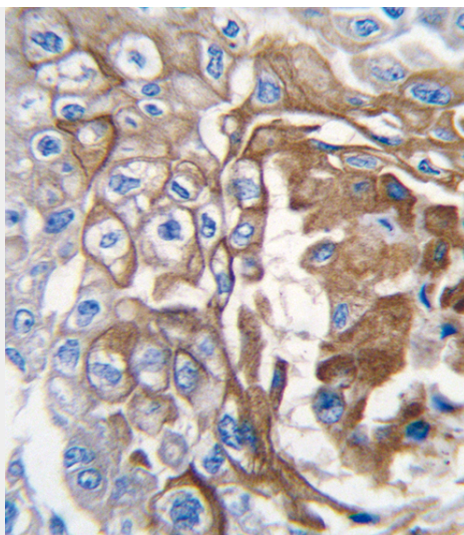
Provided below are standard protocols that you may find useful for product applications.

- [Western Blot](#)
- [Blocking Peptides](#)
- [Dot Blot](#)
- [Immunohistochemistry](#)
- [Immunofluorescence](#)
- [Immunoprecipitation](#)
- [Flow Cytometry](#)
- [Cell Culture](#)

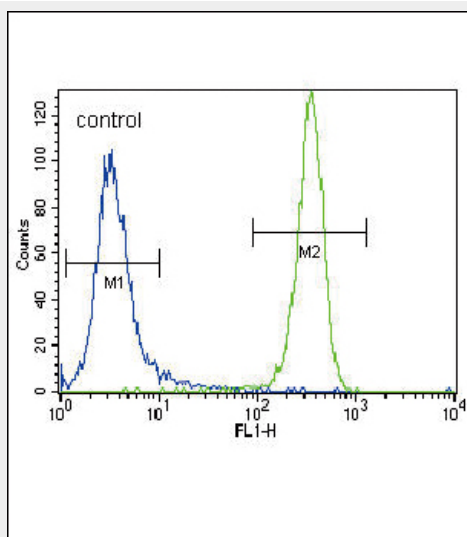
**NRAS Antibody (C-term) - Images**



Western blot analysis of lysates from MCF-7, A375 cell line (from left to right), using NRAS Antibody (C-term) (Cat. #AW5296). AW5296 was diluted at 1:1000 at each lane. A goat anti-rabbit IgG H&L (HRP) at 1:10000 dilution was used as the secondary antibody.



Formalin-fixed and paraffin-embedded human lung carcinoma tissue reacted with NRAS antibody (C-term) , which was peroxidase-conjugated to the secondary antibody, followed by DAB staining. This data demonstrates the use of this antibody for immunohistochemistry; clinical relevance has not been evaluated.



NRAS Antibody (C-term) (Cat. #AW5296) flow cytometric analysis of NCI-H460 cells (right histogram) compared to a negative control cell (left histogram).FITC-conjugated goat-anti-rabbit secondary antibodies were used for the analysis.

### NRAS Antibody (C-term) - Background

NRAS is a membrane protein that shuttles between the Golgi apparatus and the plasma membrane. This shuttling is regulated through palmitoylation and depalmitoylation by the ZDHHC9-GOLGA7 complex. This protein, which has intrinsic GTPase activity, is activated to a GTP-bound form by a GTPase activating protein and inactivated to a GDP-bound form by a guanine nucleotide-exchange factor. Defects in the gene encoding this protein are a cause of juvenile myelomonocytic leukemia (JMML).

### NRAS Antibody (C-term) - References

Smalley,K.S., Cancer Res. 68 (14), 5743-5752 (2008)  
Banerji,U., Mol. Cancer Ther. 7 (4), 737-739 (2008)