

**CARD6 Antibody (Center)**  
**Affinity Purified Rabbit Polyclonal Antibody (Pab)**  
**Catalog # AW5322**

**Specification**

---

**CARD6 Antibody (Center) - Product Information**

Application	WB, IHC-P,E
Primary Accession	<a href="#">Q9BX69</a>
Reactivity	Human
Host	Rabbit
Clonality	Polyclonal
Calculated MW	H=116 KDa
Isotype	Rabbit IgG
Antigen Source	HUMAN

**CARD6 Antibody (Center) - Additional Information**

**Gene ID** 84674

**Other Names**

Caspase recruitment domain-containing protein 6; CARD6

**Dilution**

WB~~1:1000

IHC-P~~1:25

**Target/Specificity**

This CARD6 antibody is generated from rabbits immunized with a KLH conjugated synthetic peptide selected from the Center region of human CARD6.

**Format**

Purified polyclonal antibody supplied in PBS with 0.09% (W/V) sodium azide. This antibody is purified through a protein A column, followed by peptide affinity purification.

**Storage**

Maintain refrigerated at 2-8°C for up to 2 weeks. For long term storage store at -20°C in small aliquots to prevent freeze-thaw cycles.

**Precautions**

CARD6 Antibody (Center) is for research use only and not for use in diagnostic or therapeutic procedures.

**CARD6 Antibody (Center) - Protein Information**

**Name** CARD6

**Function**

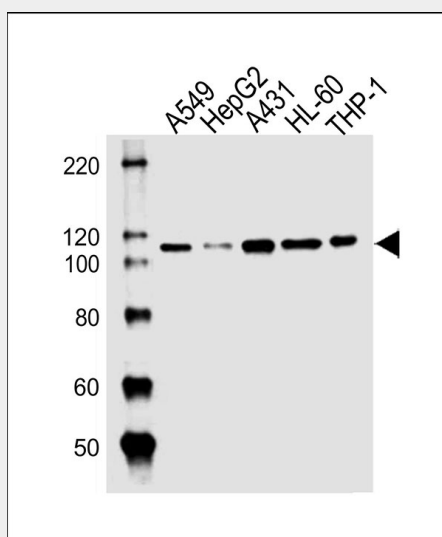
May be involved in apoptosis.

## CARD6 Antibody (Center) - Protocols

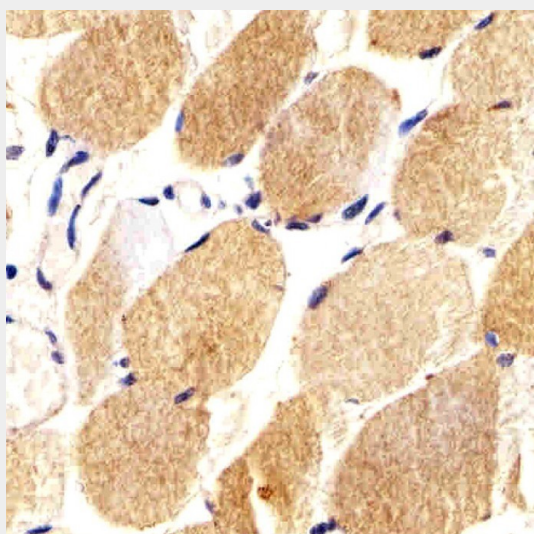
Provided below are standard protocols that you may find useful for product applications.

- [Western Blot](#)
- [Blocking Peptides](#)
- [Dot Blot](#)
- [Immunohistochemistry](#)
- [Immunofluorescence](#)
- [Immunoprecipitation](#)
- [Flow Cytometry](#)
- [Cell Culture](#)

## CARD6 Antibody (Center) - Images



Western blot analysis of lysates from A549, HepG2, A431, HL-60, THP-1 cell line (from left to right), using CARD6 Antibody (Center) (Cat. #AW5322). AW5322 was diluted at 1:1000 at each lane. A goat anti-rabbit IgG H&L (HRP) at 1:10000 dilution was used as the secondary antibody. Lysates at 20 µg per lane.



Immunohistochemical analysis of paraffin-embedded H. skeletal muscle section using CARD6 Antibody (Center)(Cat#AW5322). AW5322 was diluted at 1:25 dilution. A undiluted biotinylated goat polyvalent antibody was used as the secondary, followed by DAB staining.

**CARD6 Antibody (Center) - Background**

CARD6 is a protein that contains a caspase recruitment domain (CARD), an antiparallel six-helical bundle that mediates homotypic protein-protein interactions. The encoded protein is a microtubule-associated protein that has been shown to interact with receptor-interacting protein kinases and positively modulate signal transduction pathways converging on activation of the inducible transcription factor NF- $\kappa$ B.

**CARD6 Antibody (Center) - References**

Kim,S.S., et.al., Pathology 42 (1), 50-53 (2010)  
Olsen,J.V., et.al., Cell 127 (3), 635-648 (2006)