

**ENG Antibody (C-term)**  
**Purified Rabbit Polyclonal Antibody (Pab)**  
**Catalog # AW5341**

**Specification**

---

**ENG Antibody (C-term) - Product Information**

Application	WB,E
Primary Accession	<a href="#">P17813</a>
Reactivity	Human
Host	Rabbit
Clonality	Polyclonal
Calculated MW	H=71, 68 KDa
Isotype	Rabbit IgG
Antigen Source	HUMAN

**ENG Antibody (C-term) - Additional Information**

**Gene ID** 2022

**Antigen Region**  
554-587

**Other Names**  
Endoglin, CD105, ENG, END

**Dilution**  
WB~~1:1000

**Target/Specificity**  
This ENG antibody is generated from a rabbit immunized with a KLH conjugated synthetic peptide between 554-587 amino acids from the C-terminal region of human ENG.

**Format**  
Purified polyclonal antibody supplied in PBS with 0.09% (W/V) sodium azide. This antibody is purified through a protein A column, followed by peptide affinity purification.

**Storage**  
Maintain refrigerated at 2-8°C for up to 2 weeks. For long term storage store at -20°C in small aliquots to prevent freeze-thaw cycles.

**Precautions**  
ENG Antibody (C-term) is for research use only and not for use in diagnostic or therapeutic procedures.

**ENG Antibody (C-term) - Protein Information**

**Name** ENG

## Synonyms END

### Function

Vascular endothelium glycoprotein that plays an important role in the regulation of angiogenesis (PubMed:<a href="http://www.uniprot.org/citations/21737454" target="\_blank">21737454</a>, PubMed:<a href="http://www.uniprot.org/citations/23300529" target="\_blank">23300529</a>). Required for normal structure and integrity of adult vasculature (PubMed:<a href="http://www.uniprot.org/citations/7894484" target="\_blank">7894484</a>). Regulates the migration of vascular endothelial cells (PubMed:<a href="http://www.uniprot.org/citations/17540773" target="\_blank">17540773</a>). Required for normal extraembryonic angiogenesis and for embryonic heart development (By similarity). May regulate endothelial cell shape changes in response to blood flow, which drive vascular remodeling and establishment of normal vascular morphology during angiogenesis (By similarity). May play a critical role in the binding of endothelial cells to integrins and/or other RGD receptors (PubMed:<a href="http://www.uniprot.org/citations/1692830" target="\_blank">1692830</a>). Acts as a TGF-beta coreceptor and is involved in the TGF-beta/BMP signaling cascade that ultimately leads to the activation of SMAD transcription factors (PubMed:<a href="http://www.uniprot.org/citations/8370410" target="\_blank">8370410</a>, PubMed:<a href="http://www.uniprot.org/citations/21737454" target="\_blank">21737454</a>, PubMed:<a href="http://www.uniprot.org/citations/22347366" target="\_blank">22347366</a>, PubMed:<a href="http://www.uniprot.org/citations/23300529" target="\_blank">23300529</a>). Required for GDF2/BMP9 signaling through SMAD1 in endothelial cells and modulates TGFB1 signaling through SMAD3 (PubMed:<a href="http://www.uniprot.org/citations/21737454" target="\_blank">21737454</a>, PubMed:<a href="http://www.uniprot.org/citations/22347366" target="\_blank">22347366</a>, PubMed:<a href="http://www.uniprot.org/citations/23300529" target="\_blank">23300529</a>).

### Cellular Location

Cell membrane; Single-pass type I membrane protein

### Tissue Location

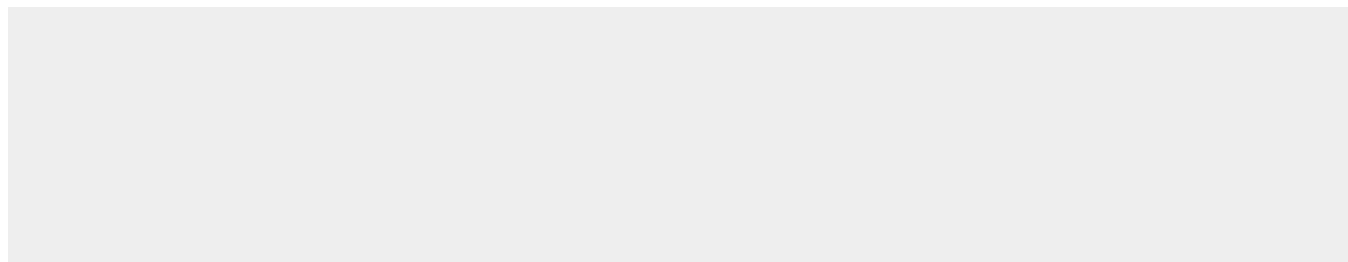
Detected on umbilical vein endothelial cells (PubMed:10625079). Detected in placenta (at protein level) (PubMed:1692830). Detected on endothelial cells (PubMed:1692830)

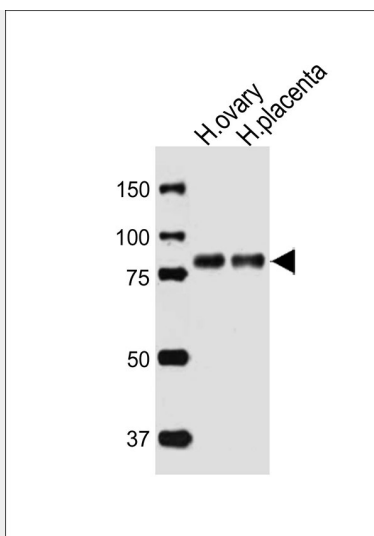
## ENG Antibody (C-term) - Protocols

Provided below are standard protocols that you may find useful for product applications.

- [Western Blot](#)
- [Blocking Peptides](#)
- [Dot Blot](#)
- [Immunohistochemistry](#)
- [Immunofluorescence](#)
- [Immunoprecipitation](#)
- [Flow Cytometry](#)
- [Cell Culture](#)

## ENG Antibody (C-term) - Images





Western blot analysis of lysates from human ovary, human placenta tissue lysate (from left to right), using ENG Antibody (C-term) (Cat. #AW5341). AW5341 was diluted at 1:1000 at each lane. A goat anti-rabbit IgG H&L (HRP) at 1:10000 dilution was used as the secondary antibody. Lysates at 20ug per lane.

#### ENG Antibody (C-term) - Background

Major glycoprotein of vascular endothelium. Involved in the regulation of angiogenesis. May play a critical role in the binding of endothelial cells to integrins and/or other RGD receptors. Acts as TGF-beta coreceptor and is involved in the TGF-beta/BMP signaling cascade. Required for GDF2/BMP9 signaling through SMAD1 in endothelial cells and modulates TGF-beta1 signaling through SMAD3.

#### ENG Antibody (C-term) - References

- Bellon T., et al. Eur. J. Immunol. 23:2340-2345(1993).
- Humphray S.J., et al. Nature 429:369-374(2004).
- Mural R.J., et al. Submitted (JUL-2005) to the EMBL/GenBank/DDBJ databases.
- Gougos A., et al. J. Biol. Chem. 265:8361-8364(1990).
- McAllister K.A., et al. Nat. Genet. 8:345-351(1994).