

TCL1A Antibody (Center)
Purified Rabbit Polyclonal Antibody (Pab)
Catalog # AW5346

Specification

TCL1A Antibody (Center) - Product Information

Application	WB, FC,E
Primary Accession	P56279
Reactivity	Human
Host	Rabbit
Clonality	Polyclonal
Calculated MW	H=13 KDa
Isotype	Rabbit IgG
Antigen Source	HUMAN

TCL1A Antibody (Center) - Additional Information

Gene ID 8115

Antigen Region
32-66

Other Names

T-cell leukemia/lymphoma protein 1A, Oncogene TCL-1, Oncogene TCL1, Protein p14 TCL1, TCL1A, TCL1

Dilution

WB~~1:1000
FC~~1:25

Target/Specificity

This TCL1A antibody is generated from a rabbit immunized with a KLH conjugated synthetic peptide between 32-66 amino acids from the Central region of human TCL1A.

Format

Purified polyclonal antibody supplied in PBS with 0.09% (W/V) sodium azide. This antibody is purified through a protein A column, followed by peptide affinity purification.

Storage

Maintain refrigerated at 2-8°C for up to 2 weeks. For long term storage store at -20°C in small aliquots to prevent freeze-thaw cycles.

Precautions

TCL1A Antibody (Center) is for research use only and not for use in diagnostic or therapeutic procedures.

TCL1A Antibody (Center) - Protein Information

Name TCL1A

Synonyms TCL1

Function

Enhances the phosphorylation and activation of AKT1, AKT2 and AKT3. Promotes nuclear translocation of AKT1. Enhances cell proliferation, stabilizes mitochondrial membrane potential and promotes cell survival.

Cellular Location

Cytoplasm. Nucleus. Microsome. Endoplasmic reticulum. Note=Microsomal fraction

Tissue Location

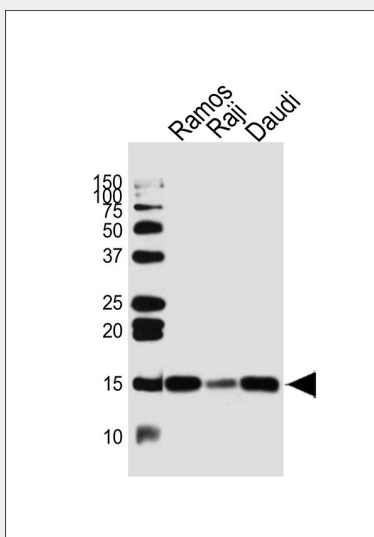
Restricted in the T-cell lineage to immature thymocytes and activated peripheral lymphocytes. Preferentially expressed early in T- and B-lymphocyte differentiation

TCL1A Antibody (Center) - Protocols

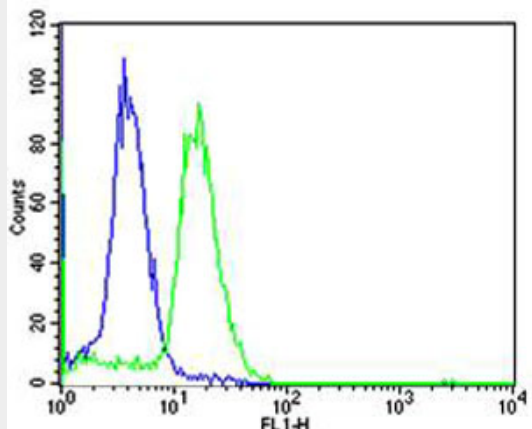
Provided below are standard protocols that you may find useful for product applications.

- [Western Blot](#)
- [Blocking Peptides](#)
- [Dot Blot](#)
- [Immunohistochemistry](#)
- [Immunofluorescence](#)
- [Immunoprecipitation](#)
- [Flow Cytometry](#)
- [Cell Culture](#)

TCL1A Antibody (Center) - Images



Western blot analysis of lysates from Ramos, Raji, Daudi cell line (from left to right), using TCL1A Antibody (Center) (Cat. #AW5346). AW5346 was diluted at 1:1000 at each lane. A goat anti-rabbit IgG H&L(HRP) at 1:10000 dilution was used as the secondary antibody. Lysates at 20ug per lane.



Flow cytometric analysis of Ramos cells using TCL1A Antibody (Center)(green, Cat#AW5346) compared to an isotype control of rabbit IgG(blue). AW5346 was diluted at 1:25 dilution. An Alexa Fluor® 488 goat anti-rabbit IgG at 1:400 dilution was used as the secondary antibody.

TCL1A Antibody (Center) - Background

Enhances the phosphorylation and activation of AKT1, AKT2 and AKT3. Promotes nuclear translocation of AKT1. Enhances cell proliferation, stabilizes mitochondrial membrane potential and promotes cell survival.

TCL1A Antibody (Center) - References

Virgilio L.,et al.Proc. Natl. Acad. Sci. U.S.A. 91:12530-12534(1994).
Ebert L.,et al.Submitted (JUN-2004) to the EMBL/GenBank/DDBJ databases.
Fu T.-B.,et al.Cancer Res. 54:6297-6301(1994).
Laine J.,et al.Mol. Cell 6:395-407(2000).
Pekarsky Y.,et al.Proc. Natl. Acad. Sci. U.S.A. 97:3028-3033(2000).