

**EPCAM Antibody (C-term)**  
**Purified Rabbit Polyclonal Antibody (Pab)**  
**Catalog # AW5357****Specification**

---

**EPCAM Antibody (C-term) - Product Information**

Application	WB,E
Primary Accession	<a href="#">P16422</a>
Other Accession	<a href="#">Q75QW1</a> , <a href="#">Q3T0L5</a>
Reactivity	Human
Predicted	Bovine, Pig
Host	Rabbit
Clonality	polyclonal
Calculated MW	H=35;M=35;Rat=35 KDa
Isotype	Rabbit IgG
Antigen Source	HUMAN

**EPCAM Antibody (C-term) - Additional Information****Gene ID** 4072**Antigen Region**  
299-334**Other Names**

Epithelial cell adhesion molecule, Ep-CAM, Adenocarcinoma-associated antigen, Cell surface glycoprotein Trop-1, Epithelial cell surface antigen, Epithelial glycoprotein, EGP, Epithelial glycoprotein 314, EGP314, hEGP314, KS 1/4 antigen, KSA, Major gastrointestinal tumor-associated protein GA733-2, T

**Dilution**

WB~~1:1000

**Target/Specificity**

This EPCAM antibody is generated from a rabbit immunized with a KLH conjugated synthetic peptide between 299-334 amino acids from the C-terminal region of human EPCAM.

**Format**

Purified polyclonal antibody supplied in PBS with 0.09% (W/V) sodium azide. This antibody is purified through a protein A column, followed by peptide affinity purification.

**Storage**

Maintain refrigerated at 2-8°C for up to 2 weeks. For long term storage store at -20°C in small aliquots to prevent freeze-thaw cycles.

**Precautions**

EPCAM Antibody (C-term) is for research use only and not for use in diagnostic or therapeutic procedures.

## EPCAM Antibody (C-term) - Protein Information

**Name** EPCAM

**Synonyms** GA733-2, M1S2, M4S1, MIC18, TACSTD1, TRO

### Function

May act as a physical homophilic interaction molecule between intestinal epithelial cells (IECs) and intraepithelial lymphocytes (IELs) at the mucosal epithelium for providing immunological barrier as a first line of defense against mucosal infection. Plays a role in embryonic stem cells proliferation and differentiation. Up-regulates the expression of FABP5, MYC and cyclins A and E.

### Cellular Location

Lateral cell membrane; Single-pass type I membrane protein. Cell junction, tight junction.  
Note=Colocalizes with CLDN7 at the lateral cell membrane and tight junction

### Tissue Location

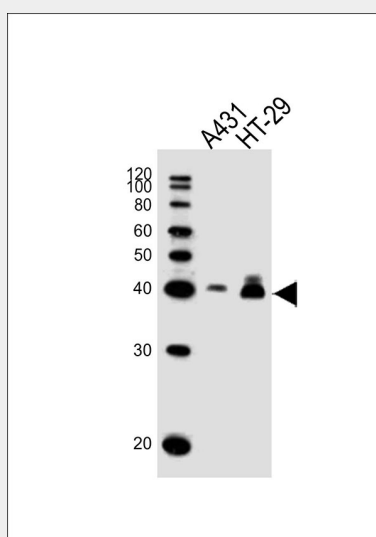
Highly and selectively expressed by undifferentiated rather than differentiated embryonic stem cells (ESC) Levels rapidly diminish as soon as ESC's differentiate (at protein levels). Expressed in almost all epithelial cell membranes but not on mesodermal or neural cell membranes. Found on the surface of adenocarcinoma.

## EPCAM Antibody (C-term) - Protocols

Provided below are standard protocols that you may find useful for product applications.

- [Western Blot](#)
- [Blocking Peptides](#)
- [Dot Blot](#)
- [Immunohistochemistry](#)
- [Immunofluorescence](#)
- [Immunoprecipitation](#)
- [Flow Cytometry](#)
- [Cell Culture](#)

## EPCAM Antibody (C-term) - Images



All lanes : Anti-EPCAM Antibody (C-term)(AW5357) at 1/1000 dilution Lane 1: A431 whole cell lysates Lane 2: HT-29 whole cell lysates Lysates/proteins at 20 µg per lane. Secondary Goat Anti-Rabbit IgG, (H+L), Peroxidase conjugated at 1/10000 dilution Predicted band size : 40 kDa Blocking/Dilution buffer: 5% NFDM/TBST.

#### **EPCAM Antibody (C-term) - Background**

May act as a physical homophilic interaction molecule between intestinal epithelial cells (IECs) and intraepithelial lymphocytes (IELs) at the mucosal epithelium for providing immunological barrier as a first line of defense against mucosal infection. Plays a role in embryonic stem cells proliferation and differentiation. Up-regulates the expression of FABP5, MYC and cyclins A and E.

#### **EPCAM Antibody (C-term) - References**

Strnad J., et al. Cancer Res. 49:314-317(1989).  
Perez M.S., et al. J. Immunol. 142:3662-3667(1989).  
Simon B., et al. Proc. Natl. Acad. Sci. U.S.A. 87:2755-2759(1990).  
Szala S., et al. Proc. Natl. Acad. Sci. U.S.A. 87:3542-3546(1990).  
Linnenbach A.J., et al. Mol. Cell. Biol. 13:1507-1515(1993).