

**Maspin Antibody (Center)**  
**Affinity Purified Rabbit Polyclonal Antibody (Pab)**  
**Catalog # AW5365****Specification**

---

**Maspin Antibody (Center) - Product Information**

Application	IF, WB, IHC-P,E
Primary Accession	<a href="#">P36952</a>
Other Accession	<a href="#">P70124</a> , <a href="#">NP_002630.2</a>
Reactivity	Human
Predicted	Mouse
Host	Rabbit
Clonality	Polyclonal
Calculated MW	H=42,26;M=42;Rat=42 KDa
Isotype	Rabbit IgG
Antigen Source	HUMAN

**Maspin Antibody (Center) - Additional Information****Gene ID** 5268**Antigen Region**  
94-123**Other Names**  
SERPINB5; PI5; Serpin B5; Maspin; Peptidase inhibitor 5**Dilution**  
IF~~1:10~50  
WB~~1:1000  
IHC-P~~1:50~100**Target/Specificity**  
This Maspin antibody is generated from rabbits immunized with a KLH conjugated synthetic peptide between 94-123 amino acids from the Central region of human Maspin.**Format**  
Purified polyclonal antibody supplied in PBS with 0.09% (W/V) sodium azide. This antibody is purified through a protein A column, followed by peptide affinity purification.**Storage**  
Maintain refrigerated at 2-8°C for up to 2 weeks. For long term storage store at -20°C in small aliquots to prevent freeze-thaw cycles.**Precautions**  
Maspin Antibody (Center) is for research use only and not for use in diagnostic or therapeutic procedures.**Maspin Antibody (Center) - Protein Information**

---

**Name** SERPINB5

**Synonyms** PI5

**Function**

Tumor suppressor. It blocks the growth, invasion, and metastatic properties of mammary tumors. As it does not undergo the S (stressed) to R (relaxed) conformational transition characteristic of active serpins, it exhibits no serine protease inhibitory activity.

**Cellular Location**

Secreted, extracellular space.

**Tissue Location**

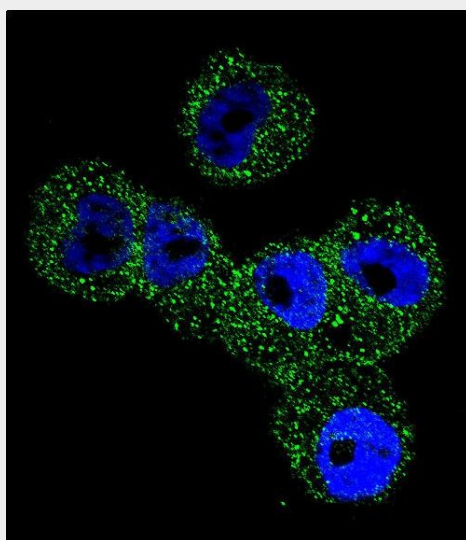
Normal mammary epithelial cells.

**Maspin Antibody (Center) - Protocols**

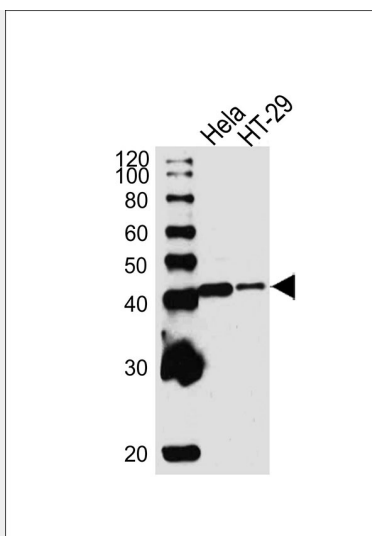
Provided below are standard protocols that you may find useful for product applications.

- [Western Blot](#)
- [Blocking Peptides](#)
- [Dot Blot](#)
- [Immunohistochemistry](#)
- [Immunofluorescence](#)
- [Immunoprecipitation](#)
- [Flow Cytometry](#)
- [Cell Culture](#)

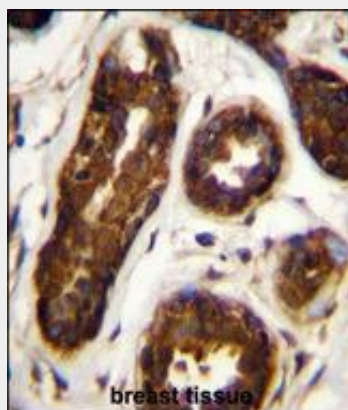
**Maspin Antibody (Center) - Images**



Confocal immunofluorescent analysis of Maspin Antibody (Center)(Cat#AW5365) with A2058 cell followed by Alexa Fluor 488-conjugated goat anti-rabbit IgG (green). DAPI was used to stain the cell nuclear (blue).



All lanes : Anti-Maspin Antibody (Center)(AW5365) at 1/1000 dilution Lane 1: HeLa whole cell lysates Lane 2: HT-29 whole cell lysates Lysates/proteins at 20 µg per lane. Secondary Goat Anti-Rabbit IgG, (H+L), Peroxidase conjugated at 1/10000 dilution Predicted band size : 42 kDa Blocking/Dilution buffer: 5% NFDM/TBST.



Maspin Antibody (Center) (Cat. #AW5365) immunohistochemistry analysis in formalin fixed and paraffin embedded human breast tissue followed by peroxidase conjugation of the secondary antibody and DAB staining. This data demonstrates the use of Maspin Antibody (Center) for immunohistochemistry. Clinical relevance has not been evaluated.

### **Maspin Antibody (Center) - Background**

SERPINB5 is a tumor suppressor. It blocks the growth, invasion, and metastatic properties of mammary tumors. As it does not undergo the S (stressed) to R (relaxed) conformational transition characteristic of active serpins, it exhibits no serine protease inhibitory activity.

### **Maspin Antibody (Center) - References**

Kim, J., et al. Tumour Biol. 31(5):471-476(2010)  
Juengel, E., et al. World J Urol 28(4):465-471(2010)  
Besgen, P., et al. J. Immunol. 184(9):5392-5402(2010)  
Fung, C.L., et al. Histopathology 56(3):319-330(2010)  
Adim, S.B., et al. World J Surg Oncol 8, 22 (2010) :