

SERBP1 Antibody (Center)
Purified Rabbit Polyclonal Antibody (Pab)
Catalog # AW5368**Specification**

SERBP1 Antibody (Center) - Product Information

Application	WB,E
Primary Accession	Q8NC51
Reactivity	Human
Predicted	Mouse, Rat
Host	Rabbit
Clonality	Polyclonal
Calculated MW	H=45,44,43,42;M=45,43,42,26;Rat=45,43 KDa
Isotype	Rabbit IgG
Antigen Source	HUMAN

SERBP1 Antibody (Center) - Additional Information**Gene ID** 26135**Antigen Region**
149-183**Other Names**

Plasminogen activator inhibitor 1 RNA-binding protein, PAI1 RNA-binding protein 1, PAI-RBP1, SERPINE1 mRNA-binding protein 1, SERBP1, PAIRBP1

Dilution

WB~~1:1000

Target/Specificity

This SERBP1 antibody is generated from a rabbit immunized with a KLH conjugated synthetic peptide between 149-183 amino acids from the Central region of human SERBP1.

Format

Purified polyclonal antibody supplied in PBS with 0.09% (W/V) sodium azide. This antibody is purified through a protein A column, followed by peptide affinity purification.

Storage

Maintain refrigerated at 2-8°C for up to 2 weeks. For long term storage store at -20°C in small aliquots to prevent freeze-thaw cycles.

Precautions

SERBP1 Antibody (Center) is for research use only and not for use in diagnostic or therapeutic procedures.

SERBP1 Antibody (Center) - Protein Information

Name SERBP1 {ECO:0000303|PubMed:36691768, ECO:0000312|HGNC:HGNC:17860}

Function

Ribosome-binding protein that promotes ribosome hibernation, a process during which ribosomes are stabilized in an inactive state and preserved from proteasomal degradation (PubMed:36691768). Acts via its association with EEF2/eEF2 factor, sequestering EEF2/eEF2 at the A- site of the ribosome and promoting ribosome stabilization and storage in an inactive state (By similarity). May also play a role in the regulation of mRNA stability: binds to the 3'-most 134 nt of the SERPINE1/PAI1 mRNA, a region which confers cyclic nucleotide regulation of message decay (PubMed:11001948). Seems to play a role in PML-nuclear bodies formation (PubMed:28695742).

Cellular Location

Cytoplasm. Nucleus. Cytoplasm, perinuclear region

Tissue Location

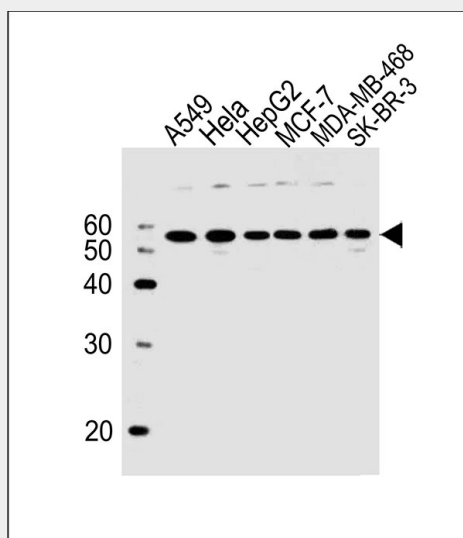
Expressed at high level in the heart, skeletal muscle and kidney, and at low levels in placenta, liver and brain

SERBP1 Antibody (Center) - Protocols

Provided below are standard protocols that you may find useful for product applications.

- [Western Blot](#)
- [Blocking Peptides](#)
- [Dot Blot](#)
- [Immunohistochemistry](#)
- [Immunofluorescence](#)
- [Immunoprecipitation](#)
- [Flow Cytometry](#)
- [Cell Culture](#)

SERBP1 Antibody (Center) - Images



All lanes : Anti-SERBP1 Antibody (Center) at 1:1/1000 dilution Lane 1: A549 whole cell lysates

Lane 2: Hela whole cell lysates Lane 3: HepG2 whole cell lysates Lane 4: MCF-7 whole cell lysates
Lane 5: MDA-MB-468 whole cell lysates Lane 6: SK-BR-3 whole cell lysates Lysates/proteins at 20
µg per lane. Secondary Goat Anti-Rabbit IgG, (H+L), Peroxidase conjugated at 1/10000 dilution
Predicted band size : 45 kDa Blocking/Dilution buffer: 5% NFDM/TBST.

SERBP1 Antibody (Center) - Background

May play a role in the regulation of mRNA stability. Binds to the 3'-most 134 nt of the
SERPINE1/PAI1 mRNA, a region which confers cyclic nucleotide regulation of message decay.

SERBP1 Antibody (Center) - References

Lai C.-H., et al. Genome Res. 10:703-713(2000).
Wiemann S., et al. Genome Res. 11:422-435(2001).
Ota T., et al. Nat. Genet. 36:40-45(2004).
Ebert L., et al. Submitted (JUN-2004) to the EMBL/GenBank/DDBJ databases.
Gregory S.G., et al. Nature 441:315-321(2006).