

**NCAM1 Antibody (C-term)**  
**Purified Rabbit Polyclonal Antibody (Pab)**  
**Catalog # AW5412**

**Specification**

---

**NCAM1 Antibody (C-term) - Product Information**

Application	WB, IHC-P, FC,E
Primary Accession	<a href="#">P13591</a>
Other Accession	<a href="#">P13596</a> , <a href="#">P13595</a> , <a href="#">P13590</a> , <a href="#">P31836</a>
Reactivity	Human, Rat
Predicted	Bovine, Chicken, Mouse
Host	Rabbit
Clonality	Polyclonal
Calculated MW	H=95,93;M=119,94;R=95 KDa
Isotype	Rabbit IgG
Antigen Source	HUMAN

**NCAM1 Antibody (C-term) - Additional Information**

**Gene ID** 4684

**Antigen Region**  
796-830

**Other Names**

Neural cell adhesion molecule 1, N-CAM-1, NCAM-1, CD56, NCAM1, NCAM

**Dilution**

WB~~1:1000  
IHC-P~~1:25  
FC~~1:25

**Target/Specificity**

This NCAM1 antibody is generated from a rabbit immunized with a KLH conjugated synthetic peptide between 796-830 amino acids from the C-terminal region of human NCAM1.

**Format**

Purified polyclonal antibody supplied in PBS with 0.09% (W/V) sodium azide. This antibody is purified through a protein A column, followed by peptide affinity purification.

**Storage**

Maintain refrigerated at 2-8°C for up to 2 weeks. For long term storage store at -20°C in small aliquots to prevent freeze-thaw cycles.

**Precautions**

NCAM1 Antibody (C-term) is for research use only and not for use in diagnostic or therapeutic procedures.

**NCAM1 Antibody (C-term) - Protein Information**

**Name** NCAM1 ([HGNC:7656](#))

**Synonyms** NCAM

### Function

This protein is a cell adhesion molecule involved in neuron- neuron adhesion, neurite fasciculation, outgrowth of neurites, etc. (Microbial infection) Acts as a receptor for Zika virus.

### Cellular Location

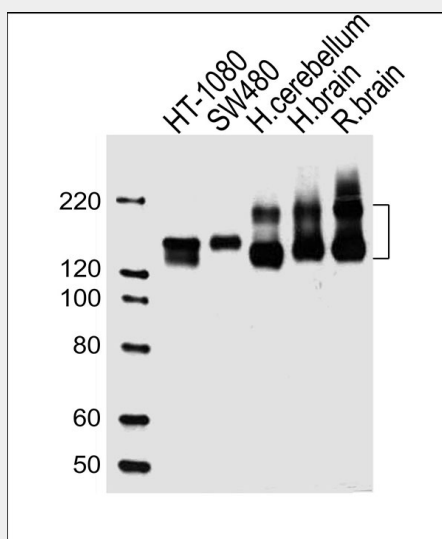
[Isoform 1]: Cell membrane; Single-pass type I membrane protein [Isoform 3]: Cell membrane; Lipid-anchor, GPI- anchor [Isoform 5]: Secreted.

## NCAM1 Antibody (C-term) - Protocols

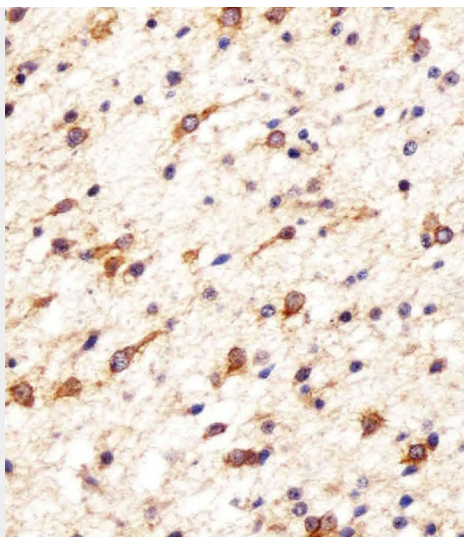
Provided below are standard protocols that you may find useful for product applications.

- [Western Blot](#)
- [Blocking Peptides](#)
- [Dot Blot](#)
- [Immunohistochemistry](#)
- [Immunofluorescence](#)
- [Immunoprecipitation](#)
- [Flow Cytometry](#)
- [Cell Culture](#)

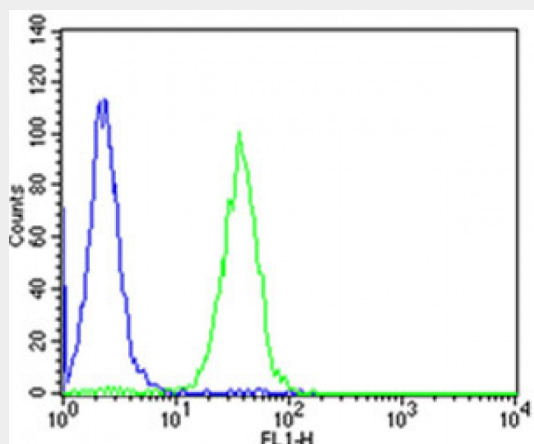
## NCAM1 Antibody (C-term) - Images



All lanes : Anti-NCAM1 Antibody (C-term) at 1:1000 dilution Lane 1: HT-1080 whole cell lysates Lane 2: SW480 whole cell lysates Lane 3: human cerebellum lysates Lane 4: human brain lysates Lane 5: rat brain lysates Lysates/proteins at 20 µg per lane. Secondary Goat Anti-Rabbit IgG, (H+L), Peroxidase conjugated at 1/10000 dilution Predicted band size : 95 kDa Blocking/Dilution buffer: 5% NFDM/TBST.



Immunohistochemical analysis of paraffin-embedded H. astroglioma section using NCAM1 Antibody (C-term)(Cat#AW5412). AW5412 was diluted at 1:25 dilution. A undiluted biotinylated goat polyvalent antibody was used as the secondary, followed by DAB staining.



Flow cytometric analysis of SH-SY5Y cells using NCAM1 Antibody (C-term)(green, Cat#AW5412) compared to an isotype control of rabbit IgG(blue). AW5412 was diluted at 1:25 dilution. An Alexa Fluor® 488 goat anti-rabbit IgG at 1:400 dilution was used as the secondary antibody.

#### **NCAM1 Antibody (C-term) - Background**

This protein is a cell adhesion molecule involved in neuron-neuron adhesion, neurite fasciculation, outgrowth of neurites, etc.

#### **NCAM1 Antibody (C-term) - References**

Barton C.H.,et al.Development 104:165-173(1988).  
Lanier L.L.,et al.J. Immunol. 146:4421-4426(1991).  
Saito S.,et al.Lung Cancer 10:307-318(1994).  
Ota T.,et al.Nat. Genet. 36:40-45(2004).  
Totoki Y.,et al.Submitted (MAR-2005) to the EMBL/GenBank/DBJ databases.