

**GNL3 Antibody (N-term)**  
**Purified Rabbit Polyclonal Antibody (Pab)**  
**Catalog # AW5415****Specification**

---

**GNL3 Antibody (N-term) - Product Information**

Application	IF, WB,E
Primary Accession	<a href="#">Q9BVP2</a>
Other Accession	<a href="#">Q8CI11</a>
Reactivity	Human, Mouse
Predicted	Rat
Host	Rabbit
Clonality	Polyclonal
Calculated MW	H=62, 61;M=61, 57;R=61 KDa
Isotype	Rabbit IgG
Antigen Source	HUMAN

**GNL3 Antibody (N-term) - Additional Information****Gene ID** 26354**Antigen Region**  
38-72**Other Names**

Guanine nucleotide-binding protein-like 3, E2-induced gene 3 protein, Novel nucleolar protein 47, NNP47, Nucleolar GTP-binding protein 3, Nucleostemin, GNL3, E2IG3, NS

**Dilution**

IF~~1:25

WB~~1:1000

**Target/Specificity**

This GNL3 antibody is generated from a rabbit immunized with a KLH conjugated synthetic peptide between 38-72 amino acids from the N-terminal region of human GNL3.

**Format**

Purified polyclonal antibody supplied in PBS with 0.09% (W/V) sodium azide. This antibody is purified through a protein A column, followed by peptide affinity purification.

**Storage**

Maintain refrigerated at 2-8°C for up to 2 weeks. For long term storage store at -20°C in small aliquots to prevent freeze-thaw cycles.

**Precautions**

GNL3 Antibody (N-term) is for research use only and not for use in diagnostic or therapeutic procedures.

**GNL3 Antibody (N-term) - Protein Information**

**Name** GNL3

**Synonyms** E2IG3, NS

**Function**

May be required to maintain the proliferative capacity of stem cells. Stabilizes MDM2 by preventing its ubiquitination, and hence proteasomal degradation (By similarity).

**Cellular Location**

Nucleus {ECO:0000250|UniProtKB:Q811S9}. Nucleus, nucleolus. Note=Shuttles between the nucleus and nucleolus. {ECO:0000250|UniProtKB:Q811S9}

**Tissue Location**

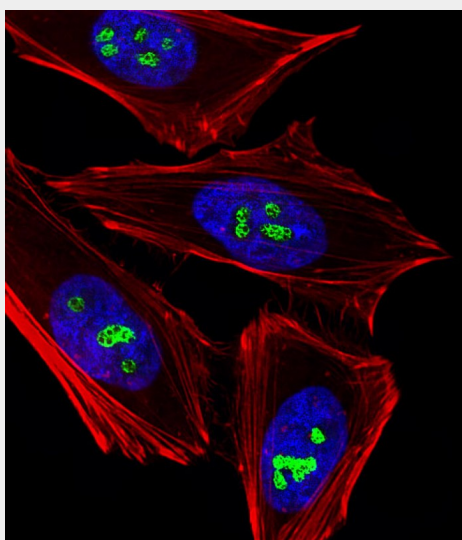
Increased levels in lung tissue in cancer patients.

**GNL3 Antibody (N-term) - Protocols**

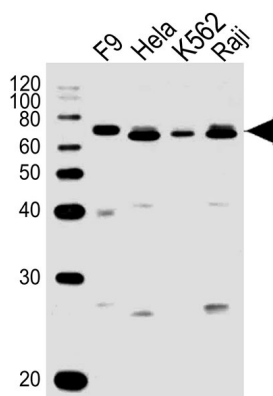
Provided below are standard protocols that you may find useful for product applications.

- [Western Blot](#)
- [Blocking Peptides](#)
- [Dot Blot](#)
- [Immunohistochemistry](#)
- [Immunofluorescence](#)
- [Immunoprecipitation](#)
- [Flow Cytometry](#)
- [Cell Culture](#)

**GNL3 Antibody (N-term) - Images**



Fluorescent image of HeLa cells stained with GNL3 Antibody (N-term)(Cat#AW5415). AW5415 was diluted at 1:25 dilution. An Alexa Fluor 488-conjugated goat anti-rabbit IgG at 1:400 dilution was used as the secondary antibody (green). Cytoplasmic actin was counterstained with Alexa Fluor® 555 conjugated with Phalloidin (red). DAPI was used to stain the cell nuclear (blue).



All lanes : Anti-GNL3 Antibody (N-term) at 1:1000 dilution Lane 1: F9 whole cell lysates Lane 2: HeLa whole cell lysates Lane 3: K562 whole cell lysates Lane 4: Raji whole cell lysates Lysates/proteins at 20 µg per lane. Secondary Goat Anti-Rabbit IgG, (H+L), Peroxidase conjugated at 1/10000 dilution Predicted band size : 62 kDa Blocking/Dilution buffer: 5% NFDM/TBST.

#### **GNL3 Antibody (N-term) - Background**

May be required to maintain the proliferative capacity of stem cells. Stabilizes MDM2 by preventing its ubiquitination, and hence proteasomal degradation (By similarity).

#### **GNL3 Antibody (N-term) - References**

Charpentier A.H.,et al.Cancer Res. 60:5977-5983(2000).  
Han C.,et al.Int. J. Mol. Med. 16:205-213(2005).  
Ota T.,et al.Nat. Genet. 36:40-45(2004).  
Muzny D.M.,et al.Nature 440:1194-1198(2006).  
Andersen J.S.,et al.Curr. Biol. 12:1-11(2002).