

**EZH2 Antibody**  
**Affinity Purified Rabbit Polyclonal Antibody (Pab)**  
**Catalog # AW5436****Specification**

---

**EZH2 Antibody - Product Information**

Application	WB,E
Primary Accession	<a href="#">Q15910</a>
Reactivity	Human, Mouse
Host	Rabbit
Clonality	Polyclonal
Calculated MW	H=85,86,81,84,80;M=85,81 KDa
Isotype	Rabbit IgG
Antigen Source	HUMAN

**EZH2 Antibody - Additional Information****Gene ID** 2146**Other Names**

Histone-lysine N-methyltransferase EZH2, ENX-1, Enhancer of zeste homolog 2, Lysine N-methyltransferase 6, EZH2, KMT6

**Dilution**

WB~~1:1000

**Target/Specificity**

This EZH2 antibody is generated from rabbits immunized with a recombinant protein from human EZH2.

**Format**

Purified polyclonal antibody supplied in PBS with 0.09% (W/V) sodium azide. This antibody is purified through a protein A column, followed by peptide affinity purification.

**Storage**

Maintain refrigerated at 2-8°C for up to 2 weeks. For long term storage store at -20°C in small aliquots to prevent freeze-thaw cycles.

**Precautions**

EZH2 Antibody is for research use only and not for use in diagnostic or therapeutic procedures.

**EZH2 Antibody - Protein Information****Name** EZH2 ([HGNC:3527](#))**Synonyms** KMT6**Function**

Polycomb group (PcG) protein. Catalytic subunit of the PRC2/EED-EZH2 complex, which methylates 'Lys-9' (H3K9me) and 'Lys-27' (H3K27me) of histone H3, leading to transcriptional repression of the affected target gene. Able to mono-, di- and trimethylate 'Lys-27' of histone H3 to form H3K27me1, H3K27me2 and H3K27me3, respectively. Displays a preference for substrates with less methylation, loses activity when progressively more methyl groups are incorporated into H3K27, H3K27me0 > H3K27me1 > H3K27me2 (PubMed:<a href="http://www.uniprot.org/citations/22323599" target="\_blank">22323599</a>, PubMed:<a href="http://www.uniprot.org/citations/30923826" target="\_blank">30923826</a>). Compared to EZH1-containing complexes, it is more abundant in embryonic stem cells and plays a major role in forming H3K27me3, which is required for embryonic stem cell identity and proper differentiation. The PRC2/EED-EZH2 complex may also serve as a recruiting platform for DNA methyltransferases, thereby linking two epigenetic repression systems. Genes repressed by the PRC2/EED-EZH2 complex include HOXC8, HOXA9, MYT1, CDKN2A and retinoic acid target genes. EZH2 can also methylate non-histone proteins such as the transcription factor GATA4 and the nuclear receptor RORA. Regulates the circadian clock via histone methylation at the promoter of the circadian genes. Essential for the CRY1/2-mediated repression of the transcriptional activation of PER1/2 by the CLOCK-BMAL1 heterodimer; involved in the di and trimethylation of 'Lys-27' of histone H3 on PER1/2 promoters which is necessary for the CRY1/2 proteins to inhibit transcription.

#### **Cellular Location**

Nucleus. Note=Localizes to the inactive X chromosome in trophoblast stem cells.  
{ECO:0000250|UniProtKB:Q61188}

#### **Tissue Location**

In the ovary, expressed in primordial follicles and oocytes and also in external follicle cells (at protein level) (PubMed:31451685). Expressed in many tissues (PubMed:14532106) Overexpressed in numerous tumor types including carcinomas of the breast, colon, larynx, lymphoma and testis (PubMed:14532106)

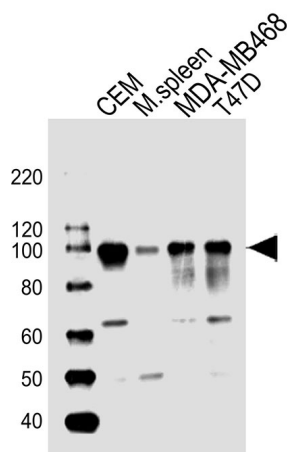
#### **EZH2 Antibody - Protocols**

Provided below are standard protocols that you may find useful for product applications.

- [Western Blot](#)
- [Blocking Peptides](#)
- [Dot Blot](#)
- [Immunohistochemistry](#)
- [Immunofluorescence](#)
- [Immunoprecipitation](#)
- [Flow Cytometry](#)
- [Cell Culture](#)

#### **EZH2 Antibody - Images**





All lanes : Anti-EZH2 Antibody at 1:1000 dilution Lane 1: CEM whole cell lysates Lane 2: mouse spleen lysates Lane 3: MDA-MB468 whole cell lysates Lane 4: T47D whole cell lysates Lysates/proteins at 20 µg per lane. Secondary Goat Anti-Rabbit IgG, (H+L), Peroxidase conjugated at 1/10000 dilution Predicted band size : 85 kDa Blocking/Dilution buffer: 5% NFDM/TBST.

### **EZH2 Antibody - Background**

EZH2 is a protein that transfers sulfate to the C-4 hydroxyl of beta-1,4-linked GalNAc flanked by GlcUA residues in chondroitin.

### **EZH2 Antibody - References**

Kang,H.G., et.al., J. Biol. Chem. 277 (38), 34766-34772 (2002)  
Hiraoka,N., et.al., J. Biol. Chem. 275 (26), 20188-20196 (2000)

### **EZH2 Antibody - Citations**

- [Impact of Enhancer of Zeste Homolog 2 on T Helper Cell-Mediated Allergic Rhinitis.](#)