

(Mouse) Suz12 Antibody (Center)
Purified Rabbit Polyclonal Antibody (Pab)
Catalog # AW5499

Specification

(Mouse) Suz12 Antibody (Center) - Product Information

Application	WB,E
Primary Accession	Q80U70
Reactivity	Human, Mouse
Host	Rabbit
Clonality	Polyclonal
Calculated MW	M=83;H=83 KDa
Isotype	Rabbit IgG
Antigen Source	HUMAN

(Mouse) Suz12 Antibody (Center) - Additional Information

Gene ID 52615

Antigen Region
496-530

Other Names

Polycomb protein Suz12, Suppressor of zeste 12 protein homolog, Suz12, D11Ert530e, Kiaa0160

Dilution

WB~~1:1000

Target/Specificity

This Mouse Suz12 antibody is generated from a rabbit immunized with a KLH conjugated synthetic peptide between 496-530 amino acids from the Central region of Mouse Suz12.

Storage

Maintain refrigerated at 2-8°C for up to 2 weeks. For long term storage store at -20°C in small aliquots to prevent freeze-thaw cycles.

Precautions

(Mouse) Suz12 Antibody (Center) is for research use only and not for use in diagnostic or therapeutic procedures.

(Mouse) Suz12 Antibody (Center) - Protein Information

Name Suz12

Synonyms D11Ert530e, Kiaa0160

Function

Polycomb group (PcG) protein. Component of the PRC2/EED-EZH2 complex, which methylates

'Lys-9' (H3K9me) and 'Lys-27' (H3K27me) of histone H3, leading to transcriptional repression of the affected target gene. The PRC2/EED-EZH2 complex may also serve as a recruiting platform for DNA methyltransferases, thereby linking two epigenetic repression systems (By similarity). Genes repressed by the PRC2/EED- EZH2 complex include HOXA7, HOXB6 and HOXC8.

Cellular Location

Nucleus. Chromosome. Note=Localizes to the inactive X chromosome in trophoblast stem cells

Tissue Location

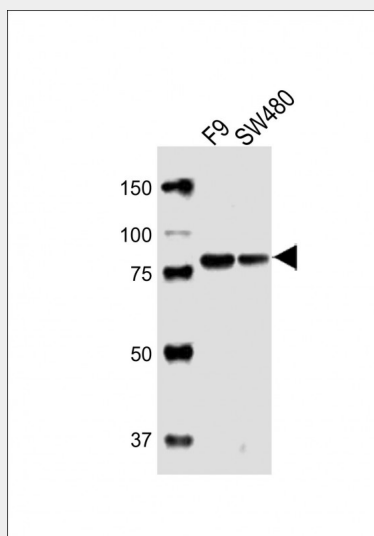
Expressed in embryonic stem cells.

(Mouse) Suz12 Antibody (Center) - Protocols

Provided below are standard protocols that you may find useful for product applications.

- [Western Blot](#)
- [Blocking Peptides](#)
- [Dot Blot](#)
- [Immunohistochemistry](#)
- [Immunofluorescence](#)
- [Immunoprecipitation](#)
- [Flow Cytometry](#)
- [Cell Culture](#)

(Mouse) Suz12 Antibody (Center) - Images



All lanes : Anti-Suz12 Antibody (Center) at 1:1000 dilution Lane 1: F9 whole cell lysates Lane 2: SW480 whole cell lysates Lysates/proteins at 20 µg per lane. Secondary Goat Anti-Rabbit IgG, (H+L), Peroxidase conjugated at 1/10000 dilution Predicted band size : 83 kDa Blocking/Dilution buffer: 5% NFDM/TBST.

(Mouse) Suz12 Antibody (Center) - Background

Polycomb group (PcG) protein. Component of the PRC2/EED- EZH2 complex, which methylates 'Lys-9' (H3K9me) and 'Lys-27' (H3K27me) of histone H3, leading to transcriptional repression of the affected target gene. The PRC2/EED-EZH2 complex may also serve as a recruiting platform for DNA methyltransferases, thereby linking two epigenetic repression systems (By similarity). Genes

repressed by the PRC2/EED-EZH2 complex include HOXA7, HOXB6 and HOXC8.

(Mouse) Suz12 Antibody (Center) - References

Okazaki N., et al. DNA Res. 10:35-48(2003).
Church D.M., et al. PLoS Biol. 7:E1000112-E1000112(2009).
Pasini D., et al. EMBO J. 23:4061-4071(2004).
Umlauf D., et al. Nat. Genet. 36:1296-1300(2004).
Kuzmichev A., et al. Proc. Natl. Acad. Sci. U.S.A. 102:1859-1864(2005).