

GPR88 Antibody (C-term)
Affinity Purified Rabbit Polyclonal Antibody (Pab)
Catalog # AW5582

Specification

GPR88 Antibody (C-term) - Product Information

Application	WB,E
Primary Accession	O9GZN0
Other Accession	O9EPB7 , O9ESP4
Reactivity	Human, Rat
Predicted	Mouse
Host	Rabbit
Clonality	Polyclonal
Calculated MW	H=40;M=40;R=40 KDa
Isotype	Rabbit IgG
Antigen Source	HUMAN

GPR88 Antibody (C-term) - Additional Information

Gene ID 54112

Antigen Region
325-352

Other Names

Probable G-protein coupled receptor 88, Striatum-specific G-protein coupled receptor, GPR88, STRG

Dilution

WB~~1:2000

Target/Specificity

This GPR88 antibody is generated from rabbits immunized with a KLH conjugated synthetic peptide between 325-352 amino acids from the C-terminal region of human GPR88.

Storage

Maintain refrigerated at 2-8°C for up to 2 weeks. For long term storage store at -20°C in small aliquots to prevent freeze-thaw cycles.

Precautions

GPR88 Antibody (C-term) is for research use only and not for use in diagnostic or therapeutic procedures.

GPR88 Antibody (C-term) - Protein Information

Name GPR88

Synonyms STRG

Function

Orphan G protein-coupled receptor implicated in a large repertoire of behavioral responses that engage motor activities, spatial learning, and emotional processing (By similarity). May play a role in the regulation of cognitive and motor function (By similarity). Couples with the heterotrimeric G protein complex of the G(i) subfamily, consisting of GNAI1, GNB1 and GNG2, thereby acting through a G(i)-mediated pathway (PubMed:35501348). Plays a role in the attenuation of D1 dopamine receptor (D1R)-mediated cAMP response in ciliated cells (PubMed:23936473). In non-ciliated cells, involved in the inhibition of the beta-2 adrenergic receptor (B2AR) response (PubMed:23936473).

Cellular Location

Cell membrane {ECO:0000250|UniProtKB:Q9ESP4}; Multi-pass membrane protein. Cell projection, cilium membrane; Multi-pass membrane protein. Cytoplasm {ECO:0000250|UniProtKB:Q9ESP4}. Nucleus {ECO:0000250|UniProtKB:Q9ESP4}. Note=Localized to cilia in ciliated cells; whereas in non-ciliated cells, distributed throughout the cell membrane (PubMed:23936473). During cortical lamination, subcellular location shifts, on the day of birth, from expression at the plasma membrane and in the cytoplasm to the nuclei of neurons. This intranuclear localization remains throughout adulthood {ECO:0000250|UniProtKB:Q9ESP4, ECO:0000269|PubMed:23936473}

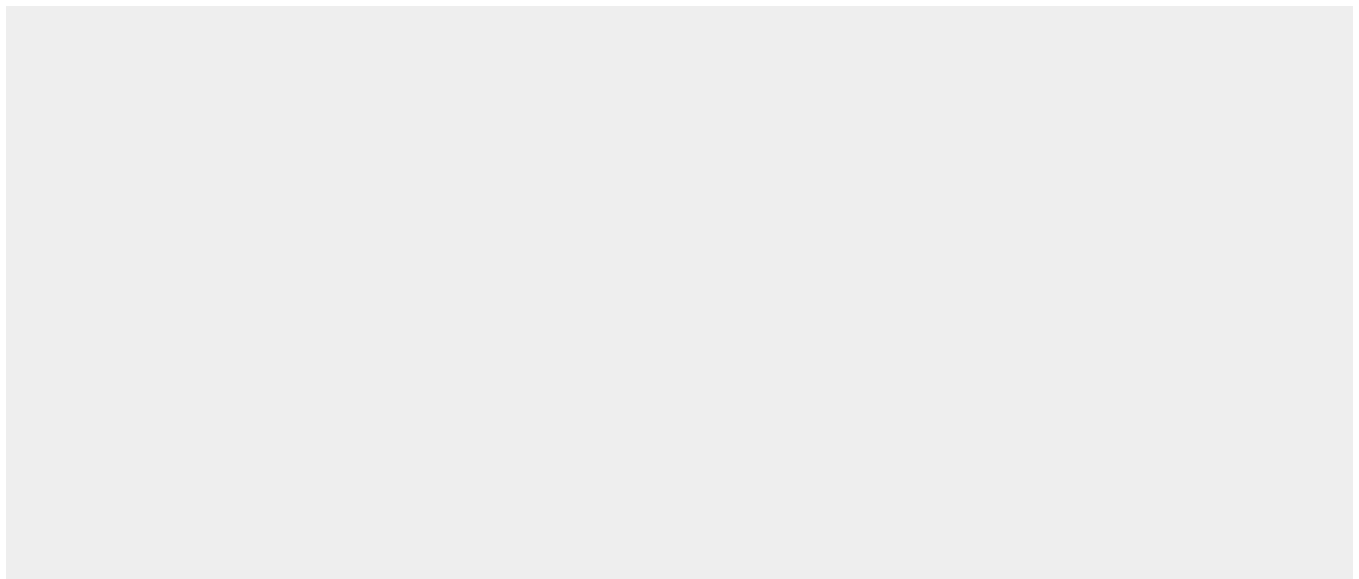
Tissue Location

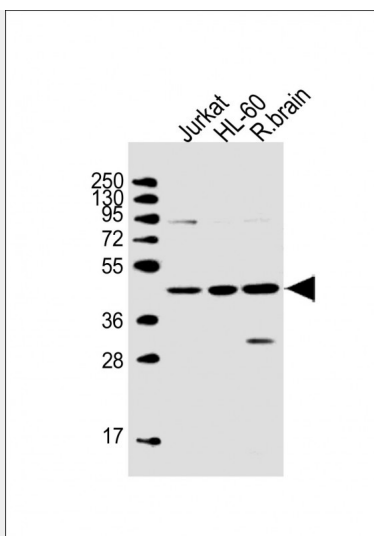
Expressed predominantly in the striatum.

GPR88 Antibody (C-term) - Protocols

Provided below are standard protocols that you may find useful for product applications.

- [Western Blot](#)
- [Blocking Peptides](#)
- [Dot Blot](#)
- [Immunohistochemistry](#)
- [Immunofluorescence](#)
- [Immunoprecipitation](#)
- [Flow Cytometry](#)
- [Cell Culture](#)

GPR88 Antibody (C-term) - Images



All lanes : Anti-GPR88 Antibody (C-term) at 1:2000 dilution Lane 1: Jurkat whole cell lysate Lane 2: HL-60 whole cell lysate Lane 3: rat brain lysate Lysates/proteins at 20 μ g per lane. Secondary Goat Anti-Rabbit IgG, (H+L), Peroxidase conjugated at 1/10000 dilution. Predicted band size : 40 kDa Blocking/Dilution buffer: 5% NFDM/TBST.

GPR88 Antibody (C-term) - Background

GPR88 is an orphan receptor.

GPR88 Antibody (C-term) - References

Mizushima, K., et al. Genomics 69(3):314-321(2000)