

**HDGF Antibody (C-term)**  
**Purified Rabbit Polyclonal Antibody (Pab)**  
**Catalog # AW5589****Specification**

---

**HDGF Antibody (C-term) - Product Information**

Application	IF, WB, IHC-P,E
Primary Accession	<a href="#">P51858</a>
Reactivity	Human
Host	Rabbit
Clonality	Polyclonal
Calculated MW	H=27,26,28;M=26 KDa
Isotype	Rabbit IgG
Antigen Source	HUMAN

**HDGF Antibody (C-term) - Additional Information****Gene ID** 3068**Antigen Region**  
171-197**Other Names**

Hepatoma-derived growth factor, HDGF, High mobility group protein 1-like 2, HMG-1L2, HDGF, HMG1L2

**Dilution**IF~~1:10~50  
WB~~1:2000  
IHC-P~~1:10~50**Target/Specificity**

This HDGF antibody is generated from rabbits immunized with a KLH conjugated synthetic peptide between 171-197 amino acids from the C-terminal region of human HDGF.

**Storage**

Maintain refrigerated at 2-8°C for up to 2 weeks. For long term storage store at -20°C in small aliquots to prevent freeze-thaw cycles.

**Precautions**

HDGF Antibody (C-term) is for research use only and not for use in diagnostic or therapeutic procedures.

**HDGF Antibody (C-term) - Protein Information****Name** HDGF**Synonyms** HMG1L2

**Function**

[Isoform 1]: Acts as a transcriptional repressor (PubMed:<a href="http://www.uniprot.org/citations/17974029" target="\_blank">17974029</a>). Has mitogenic activity for fibroblasts (PubMed:<a href="http://www.uniprot.org/citations/11751870" target="\_blank">11751870</a>, PubMed:<a href="http://www.uniprot.org/citations/26845719" target="\_blank">26845719</a>). Heparin-binding protein (PubMed:<a href="http://www.uniprot.org/citations/15491618" target="\_blank">15491618</a>).

**Cellular Location**

[Isoform 1]: Nucleus. Cytoplasm. Secreted, extracellular exosome. Note=Secreted by exosomes and is located inside the exosome (PubMed:27926477). May also be secreted as free protein via an as yet unknown pathway (PubMed:27926477) [Isoform 3]: Nucleus. Cytoplasm Secreted, extracellular exosome Note=Secreted by exosomes and is located on the outer exosome surface

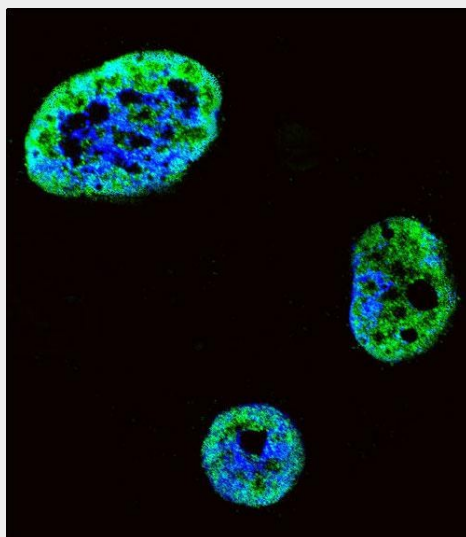
**Tissue Location**

Ubiquitous..

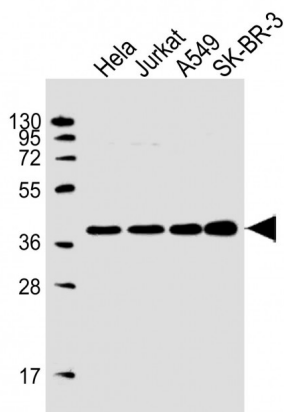
**HDGF Antibody (C-term) - Protocols**

Provided below are standard protocols that you may find useful for product applications.

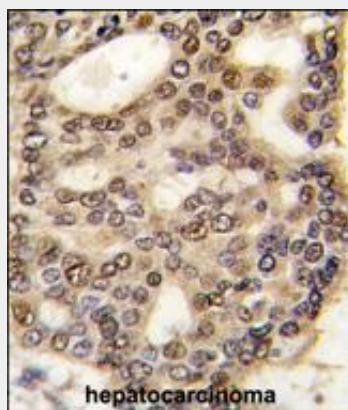
- [Western Blot](#)
- [Blocking Peptides](#)
- [Dot Blot](#)
- [Immunohistochemistry](#)
- [Immunofluorescence](#)
- [Immunoprecipitation](#)
- [Flow Cytometry](#)
- [Cell Culture](#)

**HDGF Antibody (C-term) - Images**

Confocal immunofluorescent analysis of HDGF Antibody (C-term)(Cat#AW5589) with SK-BR-3 cell followed by Alexa Fluor 488-conjugated goat anti-rabbit IgG (green).DAPI was used to stain the cell nuclear (blue).



All lanes : Anti-HDGF Antibody (C-term) at 1:2000 dilution Lane 1: Hela whole cell lysate Lane 2: Jurkat whole cell lysate Lane 3: A549 whole cell lysate Lane 4: SK-BR-3 whole cell lysate Lysates/proteins at 20 µg per lane. Secondary Goat Anti-Rabbit IgG, (H+L), Peroxidase conjugated at 1/10000 dilution. Predicted band size : 27 kDa Blocking/Dilution buffer: 5% NFDM/TBST.



Formalin-fixed and paraffin-embedded human hepatocarcinoma tissue reacted with HDGF antibody (C-term) (Cat.#AW5589), which was peroxidase-conjugated to the secondary antibody, followed by DAB staining. This data demonstrates the use of this antibody for immunohistochemistry; clinical relevance has not been evaluated.

#### **HDGF Antibody (C-term) - Background**

HDGF is a member of the hepatoma-derived growth factor family. This protein has mitogenic and DNA-binding activity and may play a role in cellular proliferation and differentiation.

#### **HDGF Antibody (C-term) - References**

- Thakar,K., FEBS J. 275 (7), 1411-1426 (2008)
- Chang,K.C.,Int. J. Cancer 121 (5), 1059-1065 (2007)
- Yamamoto,S., Ann. Surg. Oncol. 14 (7), 2141-2149 (2007)
- Uyama,H., Clin. Cancer Res. 12 (20 PT 1), 6043-6048 (2006)