

EWSR1 Antibody (C-term)
Purified Rabbit Polyclonal Antibody (Pab)
Catalog # AW5593**Specification**

EWSR1 Antibody (C-term) - Product Information

Application	IF, WB,E
Primary Accession	Q01844
Other Accession	Q61545
Reactivity	Human, Mouse
Predicted	Dog
Host	Rabbit
Clonality	Polyclonal
Calculated MW	H=68, 69, 61, 63;M=68 KDa
Isotype	Rabbit IgG
Antigen Source	HUMAN

EWSR1 Antibody (C-term) - Additional Information**Gene ID** 2130**Antigen Region**
619-654**Other Names**

RNA-binding protein EWS, EWS oncogene, Ewing sarcoma breakpoint region 1 protein, EWSR1, EWS

Dilution

IF~~1:25

WB~~1:2000

Target/Specificity

This EWSR1 antibody is generated from a rabbit immunized with a KLH conjugated synthetic peptide between 619-654 amino acids from the C-terminal region of human EWSR1.

Storage

Maintain refrigerated at 2-8°C for up to 2 weeks. For long term storage store at -20°C in small aliquots to prevent freeze-thaw cycles.

Precautions

EWSR1 Antibody (C-term) is for research use only and not for use in diagnostic or therapeutic procedures.

EWSR1 Antibody (C-term) - Protein Information**Name** EWSR1

Synonyms EWS

Function

Might normally function as a transcriptional repressor. EWS- fusion-proteins (EFPS) may play a role in the tumorigenic process. They may disturb gene expression by mimicking, or interfering with the normal function of CTD-POLII within the transcription initiation complex. They may also contribute to an aberrant activation of the fusion protein target genes.

Cellular Location

Nucleus. Cytoplasm. Cell membrane. Note=Relocates from cytoplasm to ribosomes upon PTK2B/FAK2 activation

Tissue Location

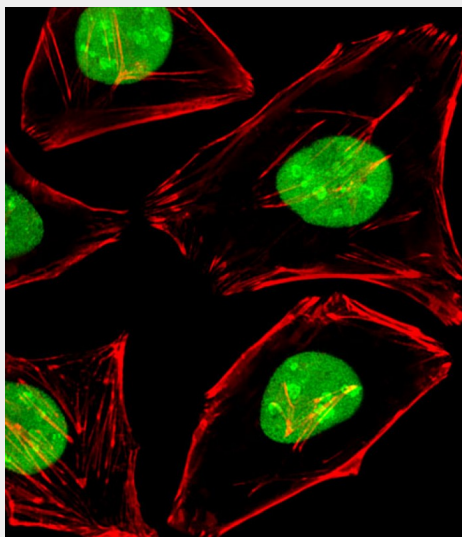
Ubiquitous.

EWSR1 Antibody (C-term) - Protocols

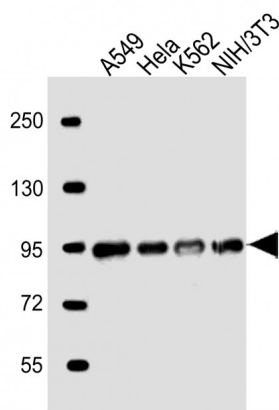
Provided below are standard protocols that you may find useful for product applications.

- [Western Blot](#)
- [Blocking Peptides](#)
- [Dot Blot](#)
- [Immunohistochemistry](#)
- [Immunofluorescence](#)
- [Immunoprecipitation](#)
- [Flow Cytometry](#)
- [Cell Culture](#)

EWSR1 Antibody (C-term) - Images



Immunofluorescent analysis of 4% paraformaldehyde-fixed, 0.1% Triton X-100 permeabilized HeLa (Human Cervical epithelial adenocarcinoma cell line) cells labeling EWSR1 with AW5593 at 1/25 dilution, followed by Alexa Fluor 488-conjugated goat anti-rabbit IgG (1583138) secondary antibody at 1/400 dilution (green). Confocal image showing nuclear staining on HeLa cell line. Cytoplasmic actin is detected with Alexa Fluor® 555 conjugated with Phalloidin (OB16636430) at 1/100 dilution (red).



All lanes : Anti-EWSR1 Antibody (C-term) at 1:2000 dilution Lane 1: A549 whole cell lysate Lane 2: HeLa whole cell lysate Lane 3: K562 whole cell lysate Lane 4: NIH/3T3 whole cell lysate Lysates/proteins at 20 µg per lane. Secondary Goat Anti-Rabbit IgG, (H+L), Peroxidase conjugated at 1/10000 dilution. Predicted band size : 68 kDa Blocking/Dilution buffer: 5% NFDM/TBST.

EWSR1 Antibody (C-term) - Background

Might normally function as a transcriptional repressor. EWS-fusion-proteins (EFPS) may play a role in the tumorigenic process. They may disturb gene expression by mimicking, or interfering with the normal function of CTD-POLII within the transcription initiation complex. They may also contribute to an aberrant activation of the fusion protein target genes.

EWSR1 Antibody (C-term) - References

Delattre O., et al. Nature 359:162-165(1992).
Plougastel B., et al. Genomics 18:609-615(1993).
Zucman-Rossi J., et al. Submitted (MAY-1998) to the EMBL/GenBank/DDBJ databases.
Collins J.E., et al. Genome Biol. 5:R84.1-R84.11(2004).
Ota T., et al. Nat. Genet. 36:40-45(2004).