

**MAML2 Antibody (Center)**  
**Purified Rabbit Polyclonal Antibody (Pab)**  
**Catalog # AW5597****Specification**

---

**MAML2 Antibody (Center) - Product Information**

Application	WB, IHC,E
Primary Accession	<a href="#">Q8IZL2</a>
Other Accession	<a href="#">A5D7F6</a>
Reactivity	Human
Predicted	Bovine
Host	Rabbit
Clonality	Polyclonal
Calculated MW	H=125 KDa
Isotype	Rabbit IgG
Antigen Source	HUMAN

**MAML2 Antibody (Center) - Additional Information****Gene ID** 84441**Antigen Region**  
780-814**Other Names**  
Mastermind-like protein 2, Mam-2, MAML2, KIAA1819**Dilution**  
WB~~1:2000  
IHC~~1:25**Target/Specificity**  
This MAML2 antibody is generated from a rabbit immunized with a KLH conjugated synthetic peptide between 780-814 amino acids from the Central region of human MAML2.**Storage**  
Maintain refrigerated at 2-8°C for up to 2 weeks. For long term storage store at -20°C in small aliquots to prevent freeze-thaw cycles.**Precautions**  
MAML2 Antibody (Center) is for research use only and not for use in diagnostic or therapeutic procedures.**MAML2 Antibody (Center) - Protein Information****Name** MAML2**Synonyms** KIAA1819

**Function**

Acts as a transcriptional coactivator for NOTCH proteins. Has been shown to amplify NOTCH-induced transcription of HES1. Potentiates activation by NOTCH3 and NOTCH4 more efficiently than MAML1 or MAML3.

**Cellular Location**

Nucleus speckle. Note=Nuclear, in a punctate manner

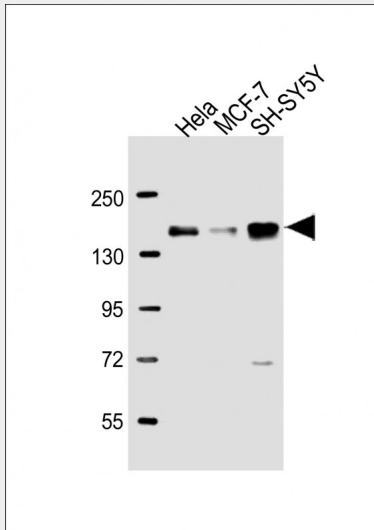
**Tissue Location**

Widely expressed with high levels detected in placenta, salivary gland and skeletal muscle

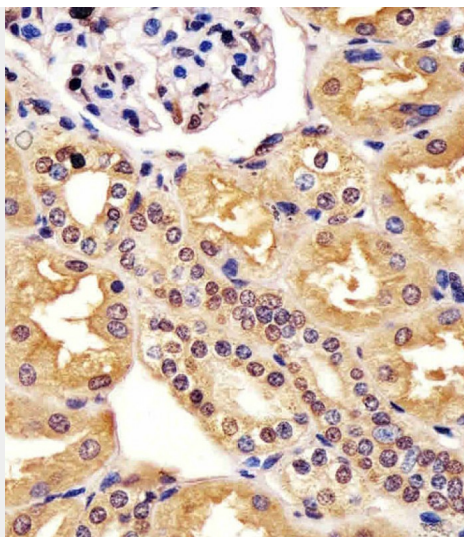
**MAML2 Antibody (Center) - Protocols**

Provided below are standard protocols that you may find useful for product applications.

- [Western Blot](#)
- [Blocking Peptides](#)
- [Dot Blot](#)
- [Immunohistochemistry](#)
- [Immunofluorescence](#)
- [Immunoprecipitation](#)
- [Flow Cytometry](#)
- [Cell Culture](#)

**MAML2 Antibody (Center) - Images**

All lanes : Anti-MAML2 Antibody (Center) at 1:2000 dilution Lane 1: HeLa whole cell lysate Lane 2: MCF-7 whole cell lysate Lane 3: SH-SY5Y whole cell lysate Lysates/proteins at 20 µg per lane. Secondary Goat Anti-Rabbit IgG, (H+L), Peroxidase conjugated at 1/10000 dilution. Predicted band size : 125 kDa Blocking/Dilution buffer: 5% NFDM/TBST.



AW5597 staining MAML2 in human kidney tissue sections by Immunohistochemistry (IHC-P - paraformaldehyde-fixed, paraffin-embedded sections). Tissue was fixed with formaldehyde and blocked with 3% BSA for 0.5 hour at room temperature; antigen retrieval was by heat mediation with a citrate buffer (pH6). Samples were incubated with primary antibody (1/25) for 1 hour at 37°C. A undiluted biotinylated goat polyvalent antibody was used as the secondary antibody.

#### **MAML2 Antibody (Center) - Background**

Acts as a transcriptional coactivator for NOTCH proteins. Has been shown to amplify NOTCH-induced transcription of HES1. Potentiates activation by NOTCH3 and NOTCH4 more efficiently than MAML1 or MAML3.

#### **MAML2 Antibody (Center) - References**

Tonon G., et al. Nat. Genet. 33:208-213(2003).  
Tonon G., et al. Nat. Genet. 33:408-408(2003).  
Nagase T., et al. DNA Res. 8:85-95(2001).  
Taylor T.D., et al. Nature 440:497-500(2006).  
Enlund F., et al. Exp. Cell Res. 292:21-28(2004).