

**GMCL1 Antibody (Center)**  
**Purified Rabbit Polyclonal Antibody (Pab)**  
**Catalog # AW5607****Specification**

---

**GMCL1 Antibody (Center) - Product Information**

Application	WB, IHC,E
Primary Accession	<a href="#">Q96IK5</a>
Other Accession	<a href="#">Q8NEA9</a>
Reactivity	Human, Mouse
Predicted	Monkey
Host	Rabbit
Clonality	Polyclonal
Calculated MW	H=59,H=60[Q8NEA9];M=60 KDa
Isotype	Rabbit IgG
Antigen Source	HUMAN

**GMCL1 Antibody (Center) - Additional Information****Gene ID** 64395**Antigen Region**  
281-315**Other Names**  
Germ cell-less protein-like 1, GMCL1, GCL**Dilution**  
WB~~0.25  
IHC~~1:25**Target/Specificity**  
This GMCL1 antibody is generated from a rabbit immunized with a KLH conjugated synthetic peptide between 281-315 amino acids from the Central region of human GMCL1.**Storage**  
Maintain refrigerated at 2-8°C for up to 2 weeks. For long term storage store at -20°C in small aliquots to prevent freeze-thaw cycles.**Precautions**  
GMCL1 Antibody (Center) is for research use only and not for use in diagnostic or therapeutic procedures.**GMCL1 Antibody (Center) - Protein Information****Name** GMCL1**Synonyms** BTBD13, GCL, SPATA29

**Function**

Possible function in spermatogenesis. Enhances the degradation of MDM2 and increases the amount of p53 probably by modulating the nucleocytoplasmic transport (By similarity).

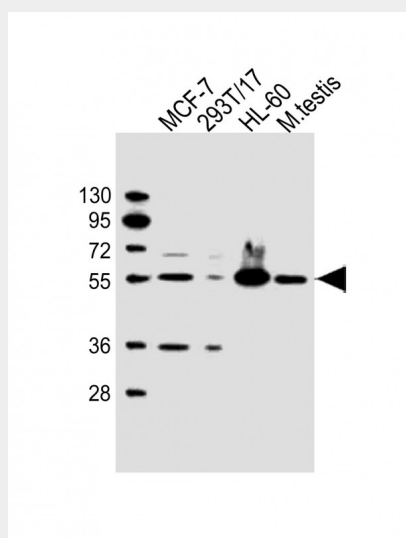
**Cellular Location**

Nucleus matrix.

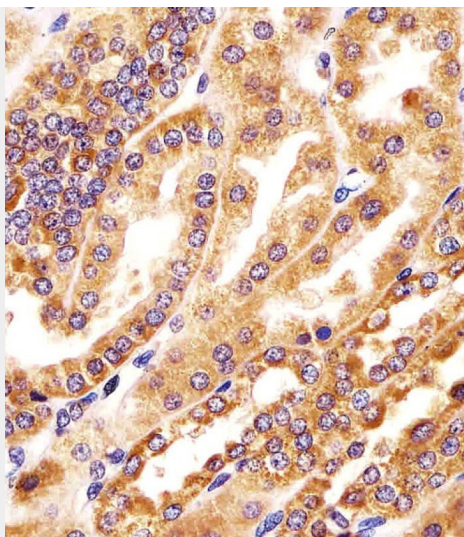
**GMCL1 Antibody (Center) - Protocols**

Provided below are standard protocols that you may find useful for product applications.

- [Western Blot](#)
- [Blocking Peptides](#)
- [Dot Blot](#)
- [Immunohistochemistry](#)
- [Immunofluorescence](#)
- [Immunoprecipitation](#)
- [Flow Cytometry](#)
- [Cell Culture](#)

**GMCL1 Antibody (Center) - Images**

All lanes : Anti-GMCL1 Antibody (Center) at 1:2000 dilution Lane 1: MCF-7 whole cell lysate Lane 2: 293T/17 whole cell lysate Lane 3: HL-60 whole cell lysate Lane 4: mouse testis lysate Lysates/proteins at 20 µg per lane. Secondary Goat Anti-Rabbit IgG, (H+L), Peroxidase conjugated at 1/10000 dilution. Predicted band size : 59 kDa Blocking/Dilution buffer: 5% NFDN/TBST.



AW5607 staining GMCL1 in human kidney tissue sections by Immunohistochemistry (IHC-P - paraformaldehyde-fixed, paraffin-embedded sections). Tissue was fixed with formaldehyde and blocked with 3% BSA for 0.5 hour at room temperature; antigen retrieval was by heat mediation with a citrate buffer (pH6). Samples were incubated with primary antibody (1/25) for 1 hour at 37°C. A undiluted biotinylated goat polyvalent antibody was used as the secondary antibody.

#### **GMCL1 Antibody (Center) - Background**

Possible function in spermatogenesis. Enhances the degradation of MDM2 and increases the amount of p53 probably by modulating the nucleocytoplasmic transport (By similarity).

#### **GMCL1 Antibody (Center) - References**

Ota T., et al. Nat. Genet. 36:40-45(2004).  
Holaska J.M., et al. J. Biol. Chem. 278:6969-6975(2003).