

UBA6 Antibody (C-term)
Affinity Purified Rabbit Polyclonal Antibody (Pab)
Catalog # AW5631**Specification**

UBA6 Antibody (C-term) - Product Information

Application	WB,E
Primary Accession	A0AVT1
Other Accession	Q8C7R4
Reactivity	Human, Mouse
Predicted	Dog
Host	Rabbit
Clonality	Polyclonal
Calculated MW	H=118,66;M=118 KDa
Isotype	Rabbit IgG
Antigen Source	HUMAN

UBA6 Antibody (C-term) - Additional Information**Gene ID** 55236**Antigen Region**
861-889**Other Names**

Ubiquitin-like modifier-activating enzyme 6, Ubiquitin-activating enzyme 6, Monocyte protein 4, MOP-4, Ubiquitin-activating enzyme E1-like protein 2, E1-L2, UBA6, MOP4, UBE1L2

Dilution

WB~~0.25

Target/Specificity

This UBA6 antibody is generated from rabbits immunized with a KLH conjugated synthetic peptide between 861-889 amino acids from the C-terminal region of human UBA6.

Storage

Maintain refrigerated at 2-8°C for up to 2 weeks. For long term storage store at -20°C in small aliquots to prevent freeze-thaw cycles.

Precautions

UBA6 Antibody (C-term) is for research use only and not for use in diagnostic or therapeutic procedures.

UBA6 Antibody (C-term) - Protein Information**Name** UBA6**Synonyms** MOP4, UBE1L2

Function

Activates ubiquitin by first adenylating its C-terminal glycine residue with ATP, and thereafter linking this residue to the side chain of a cysteine residue in E1, yielding a ubiquitin-E1 thioester and free AMP. Specific for ubiquitin, does not activate ubiquitin-like peptides. Differs from UBE1 in its specificity for substrate E2 charging. Does not charge cell cycle E2s, such as CDC34. Essential for embryonic development. Required for UBD/FAT10 conjugation. Isoform 2 may play a key role in ubiquitin system and may influence spermatogenesis and male fertility.

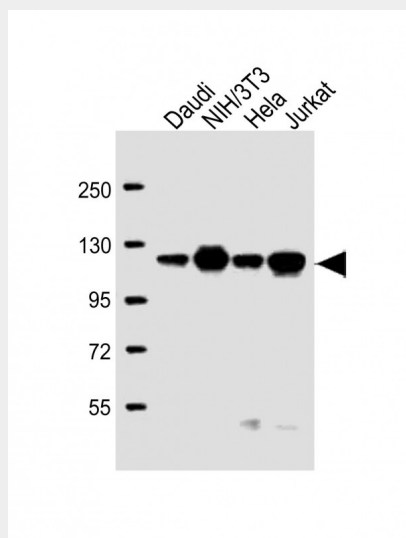
Tissue Location

Widely expressed. Isoform 2 is predominantly expressed in testis with higher expression in adult testis than in fetal testis.

UBA6 Antibody (C-term) - Protocols

Provided below are standard protocols that you may find useful for product applications.

- [Western Blot](#)
- [Blocking Peptides](#)
- [Dot Blot](#)
- [Immunohistochemistry](#)
- [Immunofluorescence](#)
- [Immunoprecipitation](#)
- [Flow Cytometry](#)
- [Cell Culture](#)

UBA6 Antibody (C-term) - Images

All lanes : Anti-UBA6 Antibody (C-term) at 1:2000 dilution Lane 1: Daudi whole cell lysate Lane 2: NIH/3T3 whole cell lysate Lane 3: HeLa whole cell lysate Lane 4: Jurkat whole cell lysate Lysates/proteins at 20 µg per lane. Secondary Goat Anti-Rabbit IgG, (H+L), Peroxidase conjugated at 1/10000 dilution. Predicted band size : 118 kDa Blocking/Dilution buffer: 5% NFDN/TBST.

UBA6 Antibody (C-term) - Background

Modification of proteins with ubiquitin (UBB; MIM 191339) or ubiquitin-like proteins controls many signaling networks and requires a ubiquitin-activating enzyme (E1), a ubiquitin

conjugating enzyme (E2), and a ubiquitin protein ligase (E3). UBE1L2 is an E1 enzyme that initiates the activation and conjugation of ubiquitin-like proteins (Jin et al., 2007 [PubMed 17597759]).

UBA6 Antibody (C-term) - References

Groettrup, M., et al. Trends Biochem. Sci. 33(5):230-237(2008)
Chiu, Y.H., et al. Mol. Cell 27(6):1014-1023(2007)
Pelzer, C., et al. J. Biol. Chem. 282(32):23010-23014(2007)
Jin, J., et al. Nature 447(7148):1135-1138(2007)
Hillier, L.W., et al. Nature 434(7034):724-731(2005)