

**PROX-1-S514 Antibody**  
**Affinity Purified Rabbit Polyclonal Antibody (Pab)**  
**Catalog # AW5644**

**Specification**

---

**PROX-1-S514 Antibody - Product Information**

Application	WB,E
Primary Accession	<a href="#">O92786</a>
Other Accession	<a href="#">P48437</a>
Reactivity	Human
Predicted	Mouse
Host	Rabbit
Clonality	Polyclonal
Calculated MW	H=83 M=83 KDa
Isotype	Rabbit IgG
Antigen Source	HUMAN

**PROX-1-S514 Antibody - Additional Information**

**Gene ID** 5629

**Antigen Region**  
492-520

**Other Names**  
Prospero homeobox protein 1, Homeobox prospero-like protein PROX1, PROX-1, PROX1

**Dilution**  
WB~~1:2000

**Target/Specificity**  
This PROX1 antibody is generated from rabbits immunized with a KLH conjugated synthetic peptide between 492-520 amino acids from human PROX1.

**Storage**  
Maintain refrigerated at 2-8°C for up to 2 weeks. For long term storage store at -20°C in small aliquots to prevent freeze-thaw cycles.

**Precautions**  
PROX-1-S514 Antibody is for research use only and not for use in diagnostic or therapeutic procedures.

**PROX-1-S514 Antibody - Protein Information**

**Name** PROX1

**Function**  
Transcription factor involved in developmental processes such as cell fate determination, gene

transcriptional regulation and progenitor cell regulation in a number of organs. Plays a critical role in embryonic development and functions as a key regulatory protein in neurogenesis and the development of the heart, eye lens, liver, pancreas and the lymphatic system. Involved in the regulation of the circadian rhythm. Represses: transcription of the retinoid-related orphan receptor ROR $\gamma$ , transcriptional activator activity of RORA and ROR $\gamma$  and the expression of RORA/G-target genes including core clock components: BMAL1, NPAS2 and CRY1 and metabolic genes: AVPR1A and ELOVL3.

#### Cellular Location

Nucleus {ECO:0000250|UniProtKB:P48437}. Note=ROR $\gamma$  promotes its nuclear localization. {ECO:0000250|UniProtKB:P48437}

#### Tissue Location

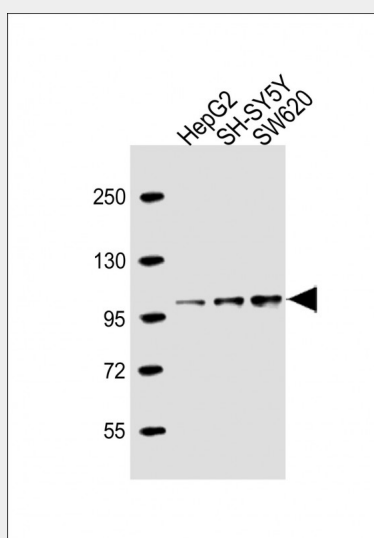
Most actively expressed in the developing lens. Detected also in embryonic brain, lung, liver and kidney. In adult, it is more abundant in heart and liver than in brain, skeletal muscle, kidney and pancreas.

### PROX-1-S514 Antibody - Protocols

Provided below are standard protocols that you may find useful for product applications.

- [Western Blot](#)
- [Blocking Peptides](#)
- [Dot Blot](#)
- [Immunohistochemistry](#)
- [Immunofluorescence](#)
- [Immunoprecipitation](#)
- [Flow Cytometry](#)
- [Cell Culture](#)

### PROX-1-S514 Antibody - Images



All lanes : Anti-PROX-1-S514 Antibody at 1:2000 dilution Lane 1: HepG2 whole cell lysate Lane 2: SH-SY5Y whole cell lysate Lane 3: SW620 whole cell lysate Lysates/proteins at 20  $\mu$ g per lane. Secondary Goat Anti-Rabbit IgG, (H+L), Peroxidase conjugated at 1/10000 dilution. Predicted band size : 83 kDa Blocking/Dilution buffer: 5% NFD/MTBST.

**PROX-1-S514 Antibody - Background**

Apolipoprotein H has been implicated in a variety of physiologic pathways including lipoprotein metabolism, coagulation, and the production of antiphospholipid autoantibodies. APOH may be a required cofactor for anionic phospholipid binding by the antiphospholipid autoantibodies found in sera of many patients with lupus and primary antiphospholipid syndrome, but it does not seem to be required for the reactivity of antiphospholipid autoantibodies associated with infections.

**PROX-1-S514 Antibody - References**

Davila, S., et al. Genes Immun. 11(3):232-238(2010)  
Zhang, C., et al. Clin. Chim. Acta 411 (5-6), 395-399 (2010)  
Suresh, S., et al. FEBS J. 277(4):951-963(2010)