

**CYK18 Antibody (C-term)**  
**Mouse Monoclonal Antibody (Mab)**  
**Catalog # AW5679****Specification**

---

**CYK18 Antibody (C-term) - Product Information**

Application	IF, WB,E
Primary Accession	<a href="#">P05783</a>
Reactivity	Human
Host	Mouse
Clonality	Monoclonal
Calculated MW	H=48 KDa
Isotype	IgG3
Antigen Source	HUMAN

**CYK18 Antibody (C-term) - Additional Information****Gene ID** 3875**Antigen Region**  
400-430**Other Names**

Keratin, type I cytoskeletal 18, Cell proliferation-inducing gene 46 protein, Cytokeratin-18, CK-18, Keratin-18, K18, KRT18, CYK18

**Dilution**

IF~~1:25

WB~~1:2000

**Target/Specificity**

This CYK18 Monoclonal antibody is generated from mice immunized with a KLH conjugated synthetic peptide selected from the 400-430 region of human CYK18.

**Storage**

Maintain refrigerated at 2-8°C for up to 2 weeks. For long term storage store at -20°C in small aliquots to prevent freeze-thaw cycles.

**Precautions**

CYK18 Antibody (C-term) is for research use only and not for use in diagnostic or therapeutic procedures.

**CYK18 Antibody (C-term) - Protein Information****Name** KRT18**Synonyms** CYK18

**Function**

Involved in the uptake of thrombin-antithrombin complexes by hepatic cells (By similarity). When phosphorylated, plays a role in filament reorganization. Involved in the delivery of mutated CFTR to the plasma membrane. Together with KRT8, is involved in interleukin-6 (IL-6)-mediated barrier protection.

**Cellular Location**

Nucleus matrix {ECO:0000250|UniProtKB:Q5BJY9}. Cytoplasm, perinuclear region. Nucleus, nucleolus. Cytoplasm {ECO:0000250|UniProtKB:Q5BJY9}

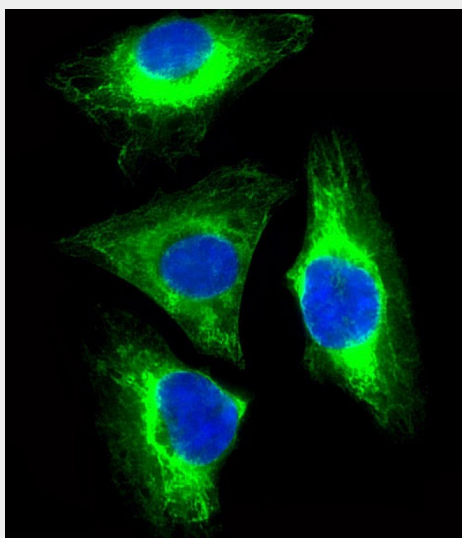
**Tissue Location**

Expressed in colon, placenta, liver and very weakly in exocervix. Increased expression observed in lymph nodes of breast carcinoma.

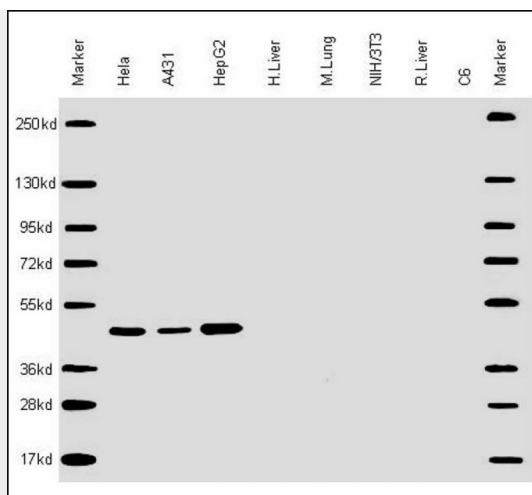
**CYK18 Antibody (C-term) - Protocols**

Provided below are standard protocols that you may find useful for product applications.

- [Western Blot](#)
- [Blocking Peptides](#)
- [Dot Blot](#)
- [Immunohistochemistry](#)
- [Immunofluorescence](#)
- [Immunoprecipitation](#)
- [Flow Cytometry](#)
- [Cell Culture](#)

**CYK18 Antibody (C-term) - Images**

Immunofluorescent analysis of 4% paraformaldehyde-fixed, 0.1% Triton X-100 permeabilized HeLa (human cervical epithelial adenocarcinoma cell line) cells labeling Pdx1 with AW5679 at 1/25 dilution, followed by Dylight® 488-conjugated goat anti-mouse IgG (NA166821) secondary antibody at 1/200 dilution (green). Immunofluorescence image showing cytoskeleton staining on HeLa cell line. The nuclear counter stain is DAPI (blue).



All lanes : Anti-CYK18 Antibody (C-term) at 1:2000 dilution Lane 1: Hela whole cell lysate Lane 2: A431 whole cell lysate Lane 3: HepG2 whole cell lysate Lane 4: human liver lysate Lane 5: mouse lung lysate Lane 6: NIH/3T3 whole cell lysate Lane 7: Rat liver lysate Lane 8: C6 whole cell lysate Lysates/proteins at 20 µg per lane. Secondary Goat Anti-mouse IgG, (H+L), Peroxidase conjugated at 1/10000 dilution. Predicted band size : 48 kDa Blocking/Dilution buffer: 5% NFDM/TBST.

#### **CYK18 Antibody (C-term) - Background**

Involved in the uptake of thrombin-antithrombin complexes by hepatic cells (By similarity). When phosphorylated, plays a role in filament reorganization. Involved in the delivery of mutated CFTR to the plasma membrane. Together with KRT8, is involved in interleukin-6 (IL-6)-mediated barrier protection.

#### **CYK18 Antibody (C-term) - References**

Oshima R.G., et al. Differentiation 33:61-68(1986).  
Kim J.W., et al. Submitted (SEP-2004) to the EMBL/GenBank/DDBJ databases.  
Kalnine N., et al. Submitted (OCT-2004) to the EMBL/GenBank/DDBJ databases.  
Suzuki Y., et al. Submitted (APR-2005) to the EMBL/GenBank/DDBJ databases.  
Kulesh D.A., et al. Mol. Cell. Biol. 8:1540-1550(1988).