

**DANRE hnf1bb Antibody (Center)**  
**Purified Rabbit Polyclonal Antibody (Pab)**  
**Catalog # Azb18694a****Specification**

---

**DANRE hnf1bb Antibody (Center) - Product Information**

|                   |                        |
|-------------------|------------------------|
| Application       | WB,E                   |
| Primary Accession | <a href="#">Q8UW00</a> |
| Reactivity        | Zebrafish              |
| Host              | Rabbit                 |
| Clonality         | Polyclonal             |
| Isotype           | Rabbit IgG             |
| Calculated MW     | 58320                  |
| Antigen Region    | 212-245                |

**DANRE hnf1bb Antibody (Center) - Additional Information****Gene ID** 324283**Other Names**

Hepatocyte nuclear factor 1-beta-B, hnf1bb {ECO:0000312|ZFIN:ZDB-GENE-030131-3003}

**Target/Specificity**

This DANRE hnf1bb antibody is generated from a rabbit immunized with a KLH conjugated synthetic peptide between 212-245 amino acids from the Central region of DANRE hnf1bb.

**Dilution**

WB~~1:1000

**Format**

Purified polyclonal antibody supplied in PBS with 0.09% (W/V) sodium azide. This antibody is purified through a protein A column, followed by peptide affinity purification.

**Storage**

Maintain refrigerated at 2-8°C for up to 2 weeks. For long term storage store at -20°C in small aliquots to prevent freeze-thaw cycles.

**Precautions**

DANRE hnf1bb Antibody (Center) is for research use only and not for use in diagnostic or therapeutic procedures.

**DANRE hnf1bb Antibody (Center) - Protein Information****Name** hnf1bb {ECO:0000312|ZFIN:ZDB-GENE-030131-3003}

**Function** Transcription factor that binds to the inverted palindrome 5'-GTTAATNATTAAC-3' (By similarity). Acts downstream of hnf1ba but is not required for induction of rhombomere r5/r6 gene expression in the hindbrain.

**Cellular Location**

Nucleus {ECO:0000250|UniProtKB:P35680, ECO:0000255|PROSITE-ProRule:PRU00108}

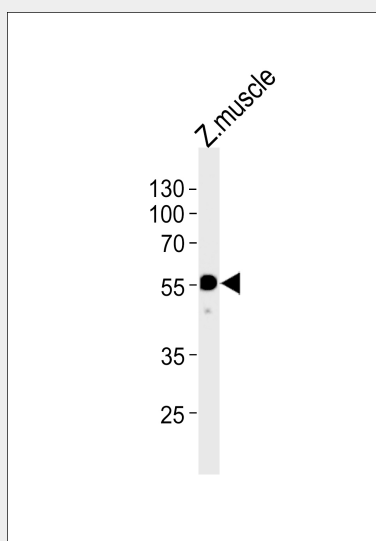
**Tissue Location**

First expressed at stage 10 in the intermediate mesoderm. Expressed in rhombomere r5 by 14 hpf with expression diminishing by 18 hpf.

**DANRE hnf1bb Antibody (Center) - Protocols**

Provided below are standard protocols that you may find useful for product applications.

- [Western Blot](#)
- [Blocking Peptides](#)
- [Dot Blot](#)
- [Immunohistochemistry](#)
- [Immunofluorescence](#)
- [Immunoprecipitation](#)
- [Flow Cytometry](#)
- [Cell Culture](#)

**DANRE hnf1bb Antibody (Center) - Images**

Western blot analysis of lysate from zebra fish muscle tissue lysate, using DANRE hnf1bb Antibody (Center)(Cat. #Azb18694a). Azb18694a was diluted at 1:1000. A goat anti-rabbit IgG H&L(HRP) at 1:5000 dilution was used as the secondary antibody. Lysate at 35ug.

**DANRE hnf1bb Antibody (Center) - Background**

Transcription factor, probably binds to the inverted palindrome 5'-GTTAATNATTAAC-3' (By similarity). Acts downstream of hnf1ba but is not required for induction of rhombomere r5/r6 gene expression in the hindbrain.

**DANRE hnf1bb Antibody (Center) - References**

Gong H.-Y.,et al.Submitted (MAR-2000) to the EMBL/GenBank/DDBJ databases.  
Choe S.-K.,et al.Zebrafish 5:179-187(2008).