

**(DANRE) zte25 Antibody (N-term)**  
**Purified Rabbit Polyclonal Antibody (Pab)**  
**Catalog # Azb18715a**

**Specification**

---

**(DANRE) zte25 Antibody (N-term) - Product Information**

Application	WB,E
Primary Accession	<a href="#">A6H8T7</a>
Reactivity	Zebrafish
Host	Rabbit
Clonality	Polyclonal
Isotype	Rabbit IgG
Antigen Region	92-126

**(DANRE) zte25 Antibody (N-term) - Additional Information**

**Other Names**

Cytosolic carboxypeptidase 2, 3417-, ATP/GTP-binding protein-like 2, Testis-expressed protein 25, zte25, agbl2, ccp2

**Target/Specificity**

This (DANRE) zte25 antibody is generated from a rabbit immunized with a KLH conjugated synthetic peptide between 92-126 amino acids of DANRE zte25.

**Dilution**

WB~~1:1000

**Format**

Purified polyclonal antibody supplied in PBS with 0.09% (W/V) sodium azide. This antibody is purified through a protein A column, followed by peptide affinity purification.

**Storage**

Maintain refrigerated at 2-8°C for up to 2 weeks. For long term storage store at -20°C in small aliquots to prevent freeze-thaw cycles.

**Precautions**

(DANRE) zte25 Antibody (N-term) is for research use only and not for use in diagnostic or therapeutic procedures.

**(DANRE) zte25 Antibody (N-term) - Protein Information**

**Name** zte25

**Synonyms** agbl2, ccp2

**Function** Metalloprotease that mediates deglutamylation of target proteins. Catalyzes the deglutamylation of polyglutamate side chains generated by post-translational polyglutamylation in proteins such as tubulins. Also removes gene-encoded polyglutamates from

the carboxy-terminus of target proteins such as MYLK. Does not show detyrosinase or deglycylase activities from the carboxy-terminus of tubulin.

#### Cellular Location

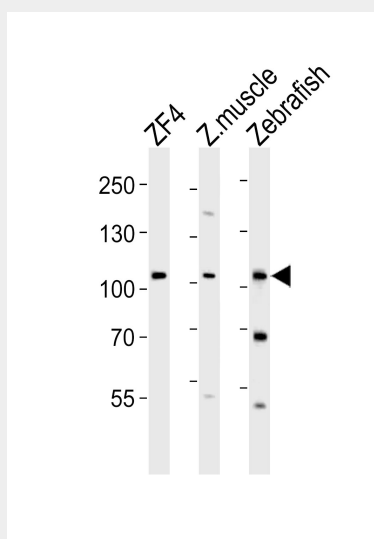
Cytoplasm, cytosol {ECO:0000250|UniProtKB:Q8CDK2}. Cytoplasm, cytoskeleton, microtubule organizing center, centrosome, centriole {ECO:0000250|UniProtKB:Q5U5Z8}. Cytoplasm, cytoskeleton, cilium basal body {ECO:0000250|UniProtKB:Q5U5Z8}. Note=Colocalizes with gamma- tubulin in the centrioles and with glutamylated tubulin in the basal bodies of ciliated cells. {ECO:0000250|UniProtKB:Q5U5Z8}

#### (DANRE) zte25 Antibody (N-term) - Protocols

Provided below are standard protocols that you may find useful for product applications.

- [Western Blot](#)
- [Blocking Peptides](#)
- [Dot Blot](#)
- [Immunohistochemistry](#)
- [Immunofluorescence](#)
- [Immunoprecipitation](#)
- [Flow Cytometry](#)
- [Cell Culture](#)

#### (DANRE) zte25 Antibody (N-term) - Images



Western blot analysis of lysates from ZF4 cell line, zebra fish muscle, Zebrafish tissue lysate (from left to right), using (DANRE) zte25 Antibody (N-term) (Cat. #Azb18715a). Azb18715a was diluted at 1:1000 at each lane. A goat anti-rabbit IgG H&L (HRP) at 1:10000 dilution was used as the secondary antibody. Lysates at 35ug per lane.

#### (DANRE) zte25 Antibody (N-term) - Background

Metalloprotease involved in the detyrosination of alpha-tubulin C-terminus (By similarity).