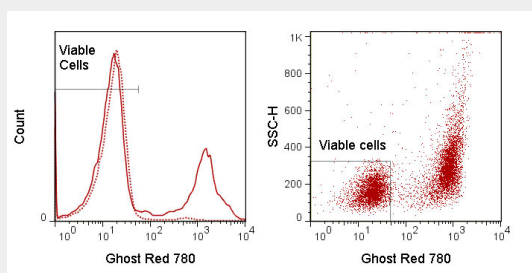


Ghost Dye™ Red 780
Catalog # RTB10002**Specification****Ghost Dye™ Red 780 - Product Information**Application **FC****Ghost Dye™ Red 780 - Additional Information****Ghost Dye™ Red 780 - Protocols**

Provided below are standard protocols that you may find useful for product applications.

- [Western Blot](#)
- [Blocking Peptides](#)
- [Dot Blot](#)
- [Immunohistochemistry](#)
- [Immunofluorescence](#)
- [Immunoprecipitation](#)
- [Flow Cytometry](#)
- [Cell Culture](#)

Ghost Dye™ Red 780 - Images

LEFT: Mouse thymocytes were incubated overnight at 4°C (dashed) or 37°C (solid) and stained with Ghost Red 780. RIGHT: Mouse splenocytes were stimulated overnight with PMA and stained with Ghost Red 780. Viable gate is indicated.

Ghost Dye™ Red 780 - Background

Ghost Dye™ Red 780 is an amine reactive viability dye that can be used to discriminate viable from non-viable mammalian cells in flow cytometry applications. This dye irreversibly binds free amines available on the cell surface as well as intracellular free amines exposed in cells with compromised cell membranes. Necrotic cells with compromised membranes will react with significantly more Ghost Dye™ Red 780 dye than viable cells in the same sample and therefore will exhibit much greater fluorescence intensity allowing exclusion of these cells from analysis.