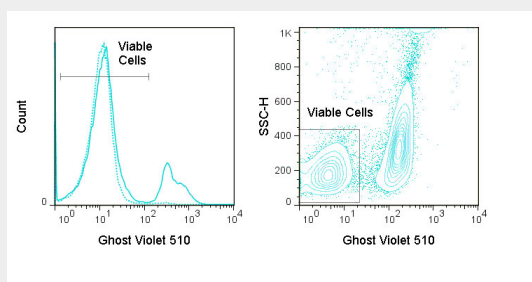


Ghost Dye™ Violet 510
Catalog # RTB10003**Specification****Ghost Dye™ Violet 510 - Product Information**Application **FC****Ghost Dye™ Violet 510 - Additional Information****Ghost Dye™ Violet 510 - Protocols**

Provided below are standard protocols that you may find useful for product applications.

- [Western Blot](#)
- [Blocking Peptides](#)
- [Dot Blot](#)
- [Immunohistochemistry](#)
- [Immunofluorescence](#)
- [Immunoprecipitation](#)
- [Flow Cytometry](#)
- [Cell Culture](#)

Ghost Dye™ Violet 510 - Images

LEFT: Mouse thymocytes were incubated overnight at 4°C (dashed) or 37°C (solid) and stained with Ghost Violet 510. RIGHT: Mouse splenocytes were stimulated overnight with PMA and stained with Ghost Violet 510. Viable gate is indicated.

Ghost Dye™ Violet 510 - Background

Ghost Dye™ Violet 510 is an amine reactive viability dye that can be used to discriminate viable from non-viable mammalian cells in flow cytometry applications. This dye irreversibly binds free amines available on the cell surface as well as intracellular free amines exposed in cells with compromised cell membranes. Necrotic cells with compromised membranes will react with significantly more Ghost Dye™ Violet 510 dye than viable cells in the same sample and therefore will exhibit much greater fluorescence intensity allowing exclusion of these cells from analysis.