

SOCS5 Antibody (N-Term)

Peptide-affinity purified goat antibody
Catalog # AF2291a

Specification

SOCS5 Antibody (N-Term) - Product Information

Application	WB
Primary Accession	O75159
Other Accession	NP_054730.1 , 9655 , 56468 (mouse)
Reactivity	Human
Predicted	Mouse, Rat, Pig, Cow
Host	Goat
Clonality	Polyclonal
Concentration	0.5 mg/ml
Isotype	IgG
Calculated MW	61246

SOCS5 Antibody (N-Term) - Additional Information

Gene ID 9655

Other Names

Suppressor of cytokine signaling 5, SOCS-5, Cytokine-inducible SH2 protein 6, CIS-6, Cytokine-inducible SH2-containing protein 5, SOCS5, CIS6, CISH5, CISH6, KIAA0671

Format

0.5 mg/ml in Tris saline, 0.02% sodium azide, pH7.3 with 0.5% bovine serum albumin

Storage

Maintain refrigerated at 2-8°C for up to 6 months. For long term storage store at -20°C in small aliquots to prevent freeze-thaw cycles.

Precautions

SOCS5 Antibody (N-Term) is for research use only and not for use in diagnostic or therapeutic procedures.

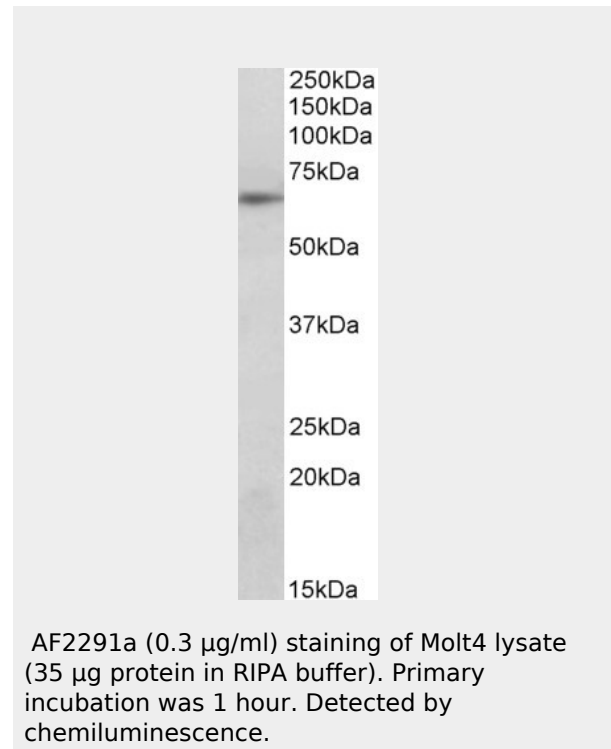
SOCS5 Antibody (N-Term) - Protein Information

Name SOCS5

Synonyms CIS6, CISH5, CISH6, KIAA0671

Function

SOCS family proteins form part of a classical negative feedback system that regulates



SOCS5 Antibody (N-Term) - Background

Both reported variants represent identical protein: NP_054730.1 and NP_659198.1.

SOCS5 Antibody (N-Term) - References

Cloning and expression of CIS6, chromosome assignment to 3p22 and 2p21 by in situ hybridization. Magrangeas F, Apiou F, Denis S, Weidle U, Jacques Y, Minvielle S. Cytogenet Cell Genet. 2000;88(1-2):78-81. PMID: 10773671

cytokine signal transduction. May be a substrate-recognition component of a SCF-like ECS (Elongin BC-CUL2/5-SOCS-box protein) E3 ubiquitin-protein ligase complex which mediates the ubiquitination and subsequent proteasomal degradation of target proteins. Inhibits for instance EGF signaling by mediating the degradation of the EGF receptor/EGFR. Involved in the regulation of T-helper cell differentiation by inhibiting of the IL4 signaling pathway which promotes differentiation into the Th2 phenotype. Can also partially inhibit IL6 and LIF signaling.

SOCS5 Antibody (N-Term) - Protocols

Provided below are standard protocols that you may find useful for product applications.

- [Western Blot](#)
- [Blocking Peptides](#)
- [Dot Blot](#)
- [Immunohistochemistry](#)
- [Immunofluorescence](#)
- [Immunoprecipitation](#)
- [Flow Cytometry](#)
- [Cell Culture](#)