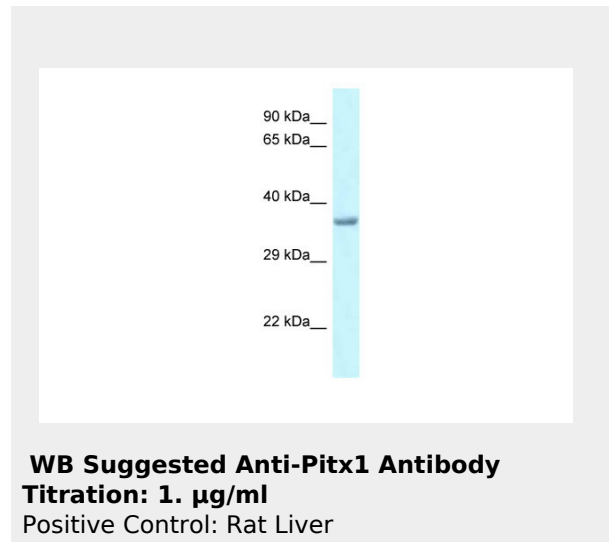


Pitx1 antibody - middle region
Rabbit Polyclonal Antibody
Catalog # AI10451

Specification

Pitx1 antibody - middle region - Product Information

Application	WB
Primary Accession	Q99NA7
Other Accession	NM_053624 , NP_446076
Reactivity	Human, Mouse, Rat, Zebrafish, Pig, Horse, Bovine, Dog
Predicted	Human, Mouse, Rat, Zebrafish, Pig, Chicken, Bovine, Guinea Pig, Dog
Host	Rabbit
Clonality	Polyclonal
Calculated MW	34kDa KDa



Pitx1 antibody - middle region - Additional Information

Gene ID 113983

Alias Symbol **Bft**
Other Names
Pituitary homeobox 1, Homeobox protein
PITX1, Paired-like homeodomain transcription
factor 1, Pitx1, Ptx1

Format
Liquid. Purified antibody supplied in 1x PBS
buffer with 0.09% (w/v) sodium azide and 2%
sucrose.

Reconstitution & Storage
Add 50 ul of distilled water. Final anti-Pitx1
antibody concentration is 1 mg/ml in PBS
buffer with 2% sucrose. For longer periods of
storage, store at 20°C. Avoid repeat
freeze-thaw cycles.

Precautions
Pitx1 antibody - middle region is for research
use only and not for use in diagnostic or
therapeutic procedures.

Pitx1 antibody - middle region - Protein Information

Name Pitx1

Synonyms Ptx1

Function

Sequence-specific transcription factor that binds gene promoters and activates their transcription. May play a role in the development of anterior structures, and in particular, the brain and facies and in specifying the identity or structure of hindlimb.

Cellular Location

Nucleus.

Pitx1 antibody - middle region - Protocols

Provided below are standard protocols that you may find useful for product applications.

- [Western Blot](#)
- [Blocking Peptides](#)
- [Dot Blot](#)
- [Immunohistochemistry](#)
- [Immunofluorescence](#)
- [Immunoprecipitation](#)
- [Flow Cytometry](#)
- [Cell Culture](#)