

BANP Antibody - N-terminal region
Rabbit Polyclonal Antibody
Catalog # AI10722

Specification

BANP Antibody - N-terminal region - Product Information

Application	WB
Primary Accession	D3DUN6
Reactivity	Human, Mouse, Rat, Rabbit, Horse, Yeast, Bovine, Dog
Predicted	Human, Mouse, Rat, Rabbit, Bovine
Host	Rabbit
Clonality	Polyclonal
Calculated MW	30kDa KDa

BANP Antibody - N-terminal region - Additional Information

Format

Liquid. Purified antibody supplied in 1x PBS buffer with 0.09% (w/v) sodium azide and 2% sucrose.

Reconstitution & Storage

Add 50 μ l of distilled water. Final Anti-BANP antibody concentration is 1 mg/ml in PBS buffer with 2% sucrose. For longer periods of storage, store at -20°C. Avoid repeat freeze-thaw cycles.

Precautions

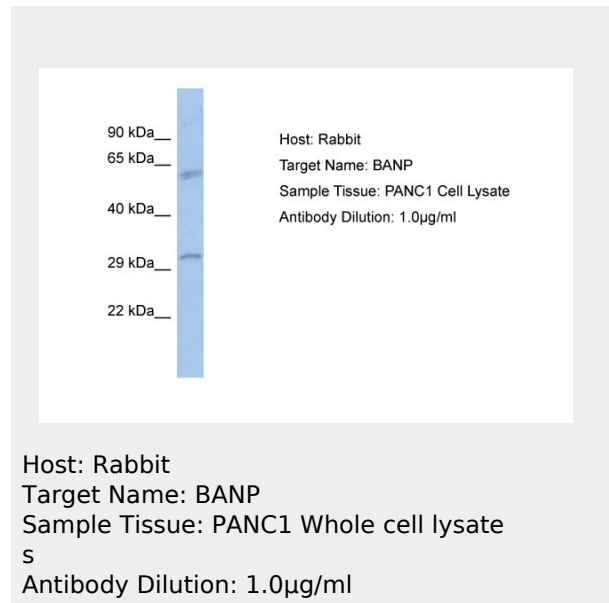
BANP Antibody - N-terminal region is for research use only and not for use in diagnostic or therapeutic procedures.

BANP Antibody - N-terminal region - Protein Information

BANP Antibody - N-terminal region - Protocols

Provided below are standard protocols that you may find useful for product applications.

- [Western Blot](#)
- [Blocking Peptides](#)
- [Dot Blot](#)
- [Immunohistochemistry](#)
- [Immunofluorescence](#)
- [Immunoprecipitation](#)



- [Flow Cytometry](#)
- [Cell Culture](#)