

## SLA antibody - N-terminal region

Rabbit Polyclonal Antibody

Catalog # AI11850

### Specification

#### SLA antibody - N-terminal region - Product Information

|                   |                                                                   |
|-------------------|-------------------------------------------------------------------|
| Application       | IHC, WB                                                           |
| Primary Accession | <a href="#">A1A4F3</a>                                            |
| Other Accession   | <a href="#">NM_153825</a> ,<br><a href="#">NP_722547</a>          |
| Reactivity        | Human, Mouse,<br>Rat, Rabbit,<br>Zebrafish, Horse,<br>Bovine, Dog |
| Predicted         | Human, Rat,<br>Zebrafish, Chicken                                 |
| Host              | Rabbit                                                            |
| Clonality         | Polyclonal                                                        |
| Calculated MW     | 49kDa KDa                                                         |

#### SLA antibody - N-terminal region - Additional Information

Alias Symbol **LP, SLA, PCH2D, SLA/LP**

#### Format

Liquid. Purified antibody supplied in 1x PBS buffer with 0.09% (w/v) sodium azide and 2% sucrose.

#### Reconstitution & Storage

Add 50 ul of distilled water. Final anti-SLA/LP antibody concentration is 1 mg/ml in PBS buffer with 2% sucrose. For longer periods of storage, store at 20°C. Avoid repeat freeze-thaw cycles.

#### Precautions

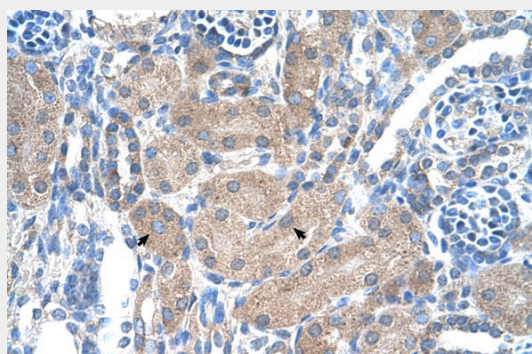
SLA antibody - N-terminal region is for research use only and not for use in diagnostic or therapeutic procedures.

#### SLA antibody - N-terminal region - Protein Information

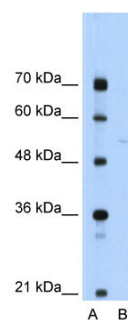
### SLA antibody - N-terminal region - Protocols

Provided below are standard protocols that you may find useful for product applications.

- [Western Blot](#)
- [Blocking Peptides](#)
- [Dot Blot](#)



Rabbit Anti-SLA/LP Antibody  
Paraffin Embedded Tissue: Human Kidney  
Cellular Data: Epithelial cells of renal tubule  
Antibody Concentration: 4.0-8.0 µg/ml  
Magnification: 400X



WB Suggested Anti-SLA Antibody Titration:  
0.2-1 µg/ml  
ELISA Titer: 1:312500  
Positive Control: Jurkat cell lysate

### SLA antibody - N-terminal region - References

Xu, X.M., (2005) J. Biol. Chem. 280 (50), 41568-41575  
Reconstitution and Storage: For short term use, store at 2-8°C up to 1 week. For long term storage, store at -20°C in small aliquots to prevent freeze-thaw cycles.

- [Immunohistochemistry](#)
- [Immunofluorescence](#)
- [Immunoprecipitation](#)
- [Flow Cytometry](#)
- [Cell Culture](#)