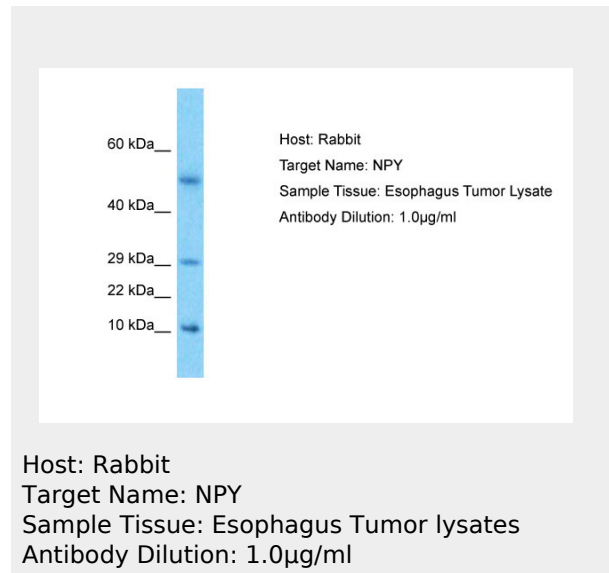


**NPY Antibody - middle region**  
Rabbit Polyclonal Antibody  
Catalog # AI11945

**Specification**

**NPY Antibody - middle region - Product Information**

Application	WB
Primary Accession	<a href="#">P01303</a>
Other Accession	<a href="#">NM_000905</a> , <a href="#">NP_000896</a>
Reactivity	Human, Mouse, Rat, Rabbit, Zebrafish, Pig, Sheep, Horse, Bovine, Dog
Predicted	Human, Mouse, Rat, Rabbit, Zebrafish, Pig, Sheep, Bovine
Host	Rabbit
Clonality	Polyclonal
Calculated MW	10kDa KDa



**NPY Antibody - middle region - Additional Information**

Gene ID 4852

Alias Symbol **PYY4**  
**Other Names**  
Pro-neuropeptide Y, Neuropeptide Y,  
Neuropeptide tyrosine, NPY, C-flanking  
peptide of NPY, CPON, NPY

**Format**

Liquid. Purified antibody supplied in 1x PBS buffer with 0.09% (w/v) sodium azide and 2% sucrose.

**Reconstitution & Storage**

Add 50 µl of distilled water. Final Anti-NPY antibody concentration is 1 mg/ml in PBS buffer with 2% sucrose. For longer periods of storage, store at -20°C. Avoid repeat freeze-thaw cycles.

**Precautions**

NPY Antibody - middle region is for research use only and not for use in diagnostic or therapeutic procedures.

**NPY Antibody - middle region - Protein Information**

Name NPY

**Function**

NPY is implicated in the control of feeding and in secretion of gonadotrophin-release hormone.

**Cellular Location**

Secreted.

**Tissue Location**

One of the most abundant peptides in the nervous system. Also found in some chromaffin cells of the adrenal medulla

**NPY Antibody - middle region -  
Protocols**

Provided below are standard protocols that you may find useful for product applications.

- [Western Blot](#)
- [Blocking Peptides](#)
- [Dot Blot](#)
- [Immunohistochemistry](#)
- [Immunofluorescence](#)
- [Immunoprecipitation](#)
- [Flow Cytometry](#)
- [Cell Culture](#)