

## BRAP Antibody(N-term)

Peptide Affinity Purified Rabbit Polyclonal Antibody (Pab)

Catalog # AP19664a

### Specification

#### BRAP Antibody(N-term) - Product Information

|                   |                             |
|-------------------|-----------------------------|
| Application       | WB,E                        |
| Primary Accession | <a href="#">Q7Z569</a>      |
| Other Accession   | <a href="#">NP_006759.3</a> |
| Reactivity        | Human                       |
| Host              | Rabbit                      |
| Clonality         | Polyclonal                  |
| Isotype           | Rabbit Ig                   |
| Clone Names       | RB41572                     |
| Calculated MW     | 67305                       |
| Antigen Region    | 66-95                       |

#### BRAP Antibody(N-term) - Additional Information

Gene ID 8315

#### Other Names

BRCA1-associated protein, 632-, BRAP2, Impedes mitogenic signal propagation, IMP, RING finger protein 52, Renal carcinoma antigen NY-REN-63, BRAP (<a href="http://www.genenames.org/cgi-bin/gene\_symbol\_repo?hgnc\_id=1099" target="\_blank">HGNC:1099</a>), RNF52

#### Target/Specificity

This BRAP antibody is generated from rabbits immunized with a KLH conjugated synthetic peptide between 66-95 amino acids from the N-terminal region of human BRAP.

#### Dilution

WB~~1:1000

#### Format

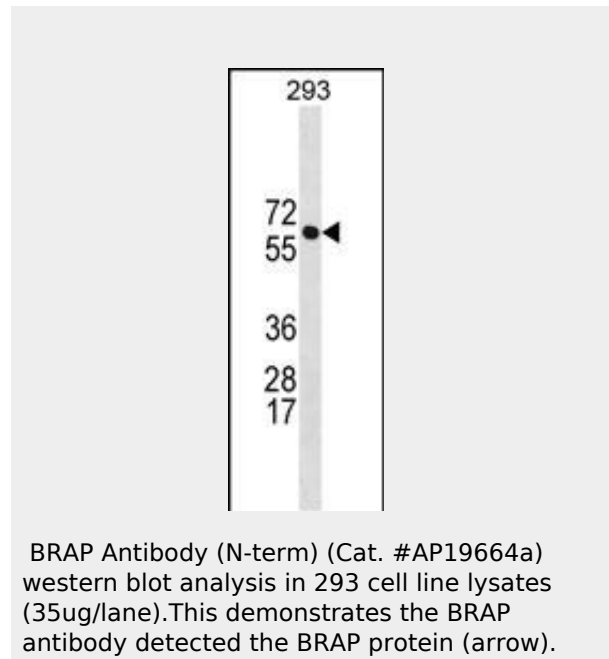
Purified polyclonal antibody supplied in PBS with 0.09% (W/V) sodium azide. This antibody is purified through a protein A column, followed by peptide affinity purification.

#### Storage

Maintain refrigerated at 2-8°C for up to 2 weeks. For long term storage store at -20°C in small aliquots to prevent freeze-thaw cycles.

#### Precautions

BRAP Antibody(N-term) is for research use only and not for use in diagnostic or therapeutic procedures.



#### BRAP Antibody(N-term) - Background

The protein encoded by this gene was identified by its ability to bind to the nuclear localization signal of BRCA1 and other proteins. It is a cytoplasmic protein which may regulate nuclear targeting by retaining proteins with a nuclear localization signal in the cytoplasm.

#### BRAP Antibody(N-term) - References

- Fulcher, A.J., et al. FASEB J. 24(5):1454-1466(2010)
- Kamatani, Y., et al. Nat. Genet. 42(3):210-215(2010)
- Ganesh, S.K., et al. Nat. Genet. 41(11):1191-1198(2009)
- Hinohara, K., et al. J. Hum. Genet. 54(11):642-646(2009)
- Cui, R., et al. Gastroenterology 137(5):1768-1775(2009)

## **BRAP Antibody(N-term) - Protein Information**

**Name** BRAP ([HGNC:1099](#))

**Synonyms** RNF52

### **Function**

Negatively regulates MAP kinase activation by limiting the formation of Raf/MEK complexes probably by inactivation of the KSR1 scaffold protein. Also acts as a Ras responsive E3 ubiquitin ligase that, on activation of Ras, is modified by auto-polyubiquitination resulting in the release of inhibition of Raf/MEK complex formation. May also act as a cytoplasmic retention protein with a role in regulating nuclear transport.

### **Cellular Location**

Cytoplasm.

### **Tissue Location**

Expressed in breast epithelial cell lines.

## **BRAP Antibody(N-term) - Protocols**

Provided below are standard protocols that you may find useful for product applications.

- [Western Blot](#)
- [Blocking Peptides](#)
- [Dot Blot](#)
- [Immunohistochemistry](#)
- [Immunofluorescence](#)
- [Immunoprecipitation](#)
- [Flow Cytometry](#)
- [Cell Culture](#)