

ADPRH Antibody (C-term)

Peptide Affinity Purified Rabbit Polyclonal Antibody (Pab)

Catalog # AP20001b

Specification

ADPRH Antibody (C-term) - Product Information

Application	WB,E
Primary Accession	P54922
Other Accession	Q32KR8 , NP_001116.1
Reactivity	Human
Predicted	Bovine
Host	Rabbit
Clonality	Polyclonal
Isotype	Rabbit Ig
Clone Names	RB42002
Calculated MW	39507
Antigen Region	306-334

ADPRH Antibody (C-term) - Additional Information

Gene ID 141

Other Names

[Protein ADP-ribosylarginine] hydrolase,
ADP-ribosylarginine hydrolase,
ADP-ribose-L-arginine cleaving enzyme,
ADPRH, ARH1

Target/Specificity

This ADPRH antibody is generated from rabbits immunized with a KLH conjugated synthetic peptide between 306-334 amino acids from the C-terminal region of human ADPRH.

Dilution

WB ~ 1:1000

Format

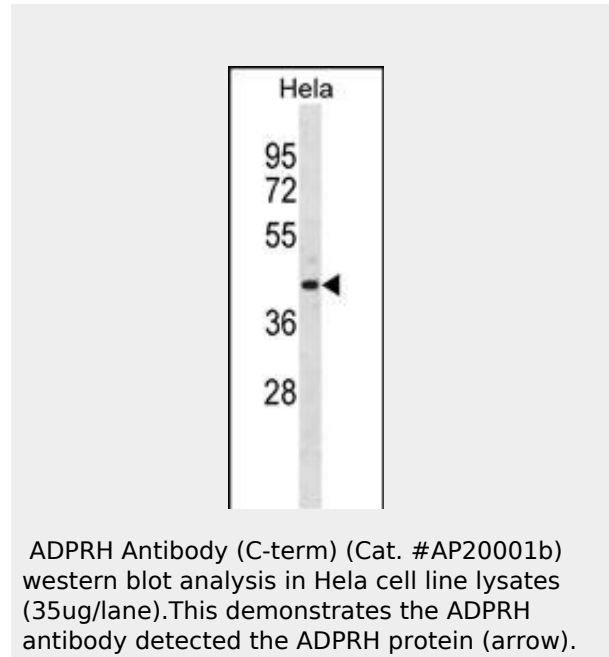
Purified polyclonal antibody supplied in PBS with 0.09% (W/V) sodium azide. This antibody is purified through a protein A column, followed by peptide affinity purification.

Storage

Maintain refrigerated at 2-8°C for up to 2 weeks. For long term storage store at -20°C in small aliquots to prevent freeze-thaw cycles.

Precautions

ADPRH Antibody (C-term) is for research use only and not for use in diagnostic or therapeutic procedures.



ADPRH Antibody (C-term) - Background

The enzyme encoded by this gene catalyzes removal of mono-ADP-ribose from arginine residues of proteins in the ADP-ribosylation cycle. Unlike the rat and mouse enzymes, which require DTT for maximal activity, the human enzyme is DTT-independent.

ADPRH Antibody (C-term) - References

- Kernstock, S., et al. Acta Crystallogr. Sect. F Struct. Biol. Cryst. Commun. 65 (PT 5), 529-532 (2009) :
- Lamesch, P., et al. Genomics 89(3):307-315(2007)
- Weber, F., et al. J. Clin. Endocrinol. Metab. 90(2):1149-1155(2005)
- Glowacki, G., et al. Protein Sci. 11(7):1657-1670(2002)
- Zolkiewska, A., et al. Adv. Exp. Med. Biol. 419, 297-303 (1997) :

ADPRH Antibody (C-term) - Protein Information

Name ADPRH

Synonyms ARH1

Function

Specifically acts as a arginine mono-ADP-ribose hydrolase by mediating the removal of mono-ADP-ribose attached to arginine residues on proteins.

ADPRH Antibody (C-term) - Protocols

Provided below are standard protocols that you may find useful for product applications.

- [Western Blot](#)
- [Blocking Peptides](#)
- [Dot Blot](#)
- [Immunohistochemistry](#)
- [Immunofluorescence](#)
- [Immunoprecipitation](#)
- [Flow Cytometry](#)
- [Cell Culture](#)