

Npy2r Antibody (N-term).ctrl
Purified Rabbit Polyclonal Antibody (Pab)
Catalog # AP21326a

Specification

Npy2r Antibody (N-term).ctrl - Product Information

Application	WB,E
Primary Accession	P97295
Reactivity	Human
Host	Rabbit
Clonality	polyclonal
Isotype	Rabbit Ig
Clone Names	RB52771
Calculated MW	42628

Npy2r Antibody (N-term).ctrl - Additional Information

Gene ID 18167

Other Names

Neuropeptide Y receptor type 2, NPY2-R,
NPY-Y2 receptor, Y2 receptor, Npy2r

Target/Specificity

This Npy2r antibody is generated from a rabbit immunized with a KLH conjugated synthetic peptide between 23-59 amino acids from the N-terminal region of human Npy2r.

Dilution

WB~~1:2000

Format

Purified polyclonal antibody supplied in PBS with 0.09% (W/V) sodium azide. This antibody is purified through a protein A column, followed by peptide affinity purification.

Storage

Maintain refrigerated at 2-8°C for up to 2 weeks. For long term storage store at -20°C in small aliquots to prevent freeze-thaw cycles.

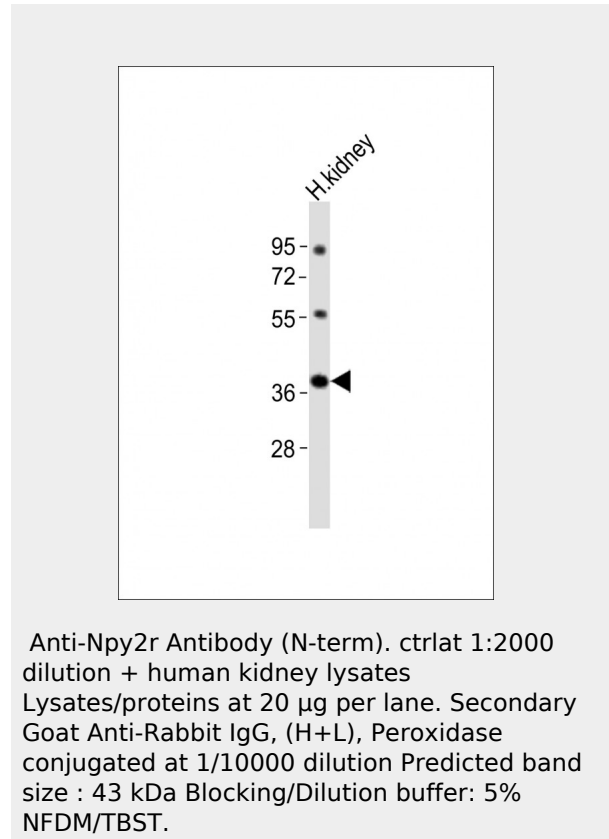
Precautions

Npy2r Antibody (N-term).ctrl is for research use only and not for use in diagnostic or therapeutic procedures.

Npy2r Antibody (N-term).ctrl - Protein Information

Name Npy2r

Function



Npy2r Antibody (N-term).ctrl - Background

Receptor for neuropeptide Y and peptide YY.

Npy2r Antibody (N-term).ctrl - References

- Nakamura M., et al. Biochim. Biophys. Acta 1284:134-137(1996).
- Carninci P., et al. Science 309:1559-1563(2005).
- Church D.M., et al. PLoS Biol. 7:E1000112-E1000112(2009).
- Mural R.J., et al. Submitted (JUL-2005) to the EMBL/GenBank/DDBJ databases.

Receptor for neuropeptide Y and peptide YY.

Cellular Location

Cell membrane; Multi-pass membrane protein.

Npy2r Antibody (N-term).ctrl - Protocols

Provided below are standard protocols that you may find useful for product applications.

- [Western Blot](#)
- [Blocking Peptides](#)
- [Dot Blot](#)
- [Immunohistochemistry](#)
- [Immunofluorescence](#)
- [Immunoprecipitation](#)
- [Flow Cytometry](#)
- [Cell Culture](#)