

SERPINA7 Antibody (N-term)

Peptide Affinity Purified Rabbit Polyclonal Antibody (Pab)

Catalog # AP6714a

Specification

SERPINA7 Antibody (N-term) - Product Information

Application	WB,E
Primary Accession	P05543
Reactivity	Human
Host	Rabbit
Clonality	Polyclonal
Isotype	Rabbit Ig
Calculated MW	46325
Antigen Region	37-65

SERPINA7 Antibody (N-term) - Additional Information

Gene ID 6906

Other Names

Thyroxine-binding globulin, Serpin A7, T4-binding globulin, SERPINA7, TBG

Target/Specificity

This SERPINA7 antibody is generated from rabbits immunized with a KLH conjugated synthetic peptide between 37-65 amino acids from the N-terminal region of human SERPINA7.

Dilution

WB~~1:1000

Format

Purified polyclonal antibody supplied in PBS with 0.09% (W/V) sodium azide. This antibody is purified through a protein A column, followed by peptide affinity purification.

Storage

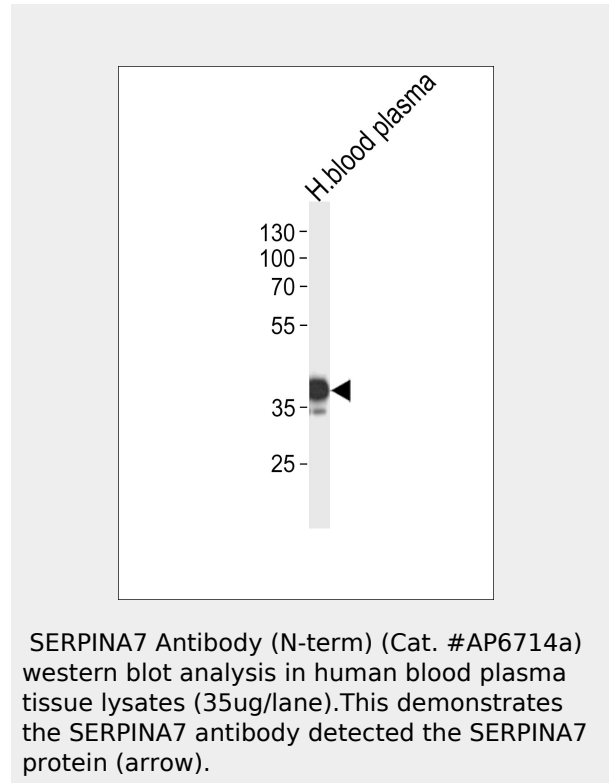
Maintain refrigerated at 2-8°C for up to 2 weeks. For long term storage store at -20°C in small aliquots to prevent freeze-thaw cycles.

Precautions

SERPINA7 Antibody (N-term) is for research use only and not for use in diagnostic or therapeutic procedures.

SERPINA7 Antibody (N-term) - Protein Information

Name SERPINA7



SERPINA7 Antibody (N-term) - Background

SERPINA7 is the major thyroid hormone transport protein in man (summarized by Mori et al., 1995 [PubMed 8530630]). Inherited abnormalities in the level of serum TBG have been classified as partial deficiency, complete deficiency, and excess. Patients are euthyroid.

SERPINA7 Antibody (N-term) - References

- Domingues, R., et al. Endocrine 36(1):83-86(2009)
- Lacka, K., et al. Thyroid 17(11):1143-1146(2007)
- Liu, T., et al. J. Proteome Res. 4(6):2070-2080(2005)
- Ross, M.T., et al. Nature 434(7031):325-337(2005)
- Anderson, N.L., et al. Mol. Cell Proteomics 3(4):311-326(2004)

Synonyms TBG**Function**

Major thyroid hormone transport protein in serum.

Cellular Location

Secreted.

Tissue Location

Expressed by the liver and secreted in plasma.

SERPINA7 Antibody (N-term) - Protocols

Provided below are standard protocols that you may find useful for product applications.

- [Western Blot](#)
- [Blocking Peptides](#)
- [Dot Blot](#)
- [Immunohistochemistry](#)
- [Immunofluorescence](#)
- [Immunoprecipitation](#)
- [Flow Cytometry](#)
- [Cell Culture](#)